

CODO 90° MACHO/HEMBRA
90° PIPE ELBOW MALE/FEMALE
CURVA 90° MASCHIO/FEMMINA

Fabricado en Bronce Naval / Made in naval Bronze. / In Bronzo navale

REF	Ø	Ø INT	Icon
GS30660	3/8"	1	Icon
GS30661	1/2"	1	Icon
GS30662	3/4"	1	Icon
GS30663	1"	1	Icon
GS30664	1 1/4"	1	Icon
GS30665	1 1/2"	1	Icon
GS30666	2"	1	Icon
GS30667	2 1/2"	1	Icon
GS30668	3"	1	Icon
GS30669	4"	1	Icon



MAESTRINI

Acero inox AISI-316. / Stainless steel AISI-316. / Acciaio inox AISI-316

REF	Ø	Ø INT	Icon
GS30550	3/8"	2	Icon
GS30551	1/2"	2	Icon
GS30552	3/4"	1	Icon
GS30553	1"	1	Icon
GS30554	1 1/4"	1	Icon
GS30555	1 1/2"	1	Icon
GS30556	2"	1	Icon



GOLDENSHIP

Fabricado en latón. / Manufactured in brass. / in ottone

REF	Ø	Ø INT	Icon
GS30170	3/8"	2	Icon
GS30171	1/2"	2	Icon
GS30172	3/4"	1	Icon
GS30173	1"	1	Icon
GS30174	1 1/4"	1	Icon
GS30175	1 1/2"	1	Icon
GS30176	2"	1	Icon
GS30177	2 1/2"	1	Icon
GS30178	3"	1	Icon



GOLDENSHIP

EMPALME T
TEE CONNECTOR
CONNETTORE T

GOLDENSHIP

Fabricado en plástico. / Made in plastic. / In plastica.

REF	Ø	Ø INT	Icon
GS30096	19 mm	3/4"	2



EMPALME Y
Y CONNECTOR
RACCORDO Y

GOLDENSHIP

Fabricado en poliamida. / Made in polyamide. / In nylon

REF	Ø	Ø INT	Icon
GS30143	10 mm	2	Icon
GS30144	12 mm	2	Icon
GS30145	16 mm	1	Icon
GS30146	19 mm	1	Icon



EMPALME RECTO
CONNECTOR
RACCORDO

GOLDENSHIP

Fabricado en poliamida. / Made in polyamide. / In nylon

REF	Ø	Ø INT	Icon
GS30137	10 mm	2	Icon
GS30138	12 mm	2	Icon
GS30139	16 mm	1	Icon
GS30140	19 mm	1	Icon



DESAGÜES • DRAIN • SCARICHI A MARE

VALVULA DESAGÜE
SCUPPER VALVE
VALVOLA SCARICO A MARE

Fabricada en plástico y neopreno. / Manufactured in white plastic with rubber flap and gasket. / In plastica con valvola in nylon. Autosvuotante. Ideal para bañeras autovaciantes. / For boats with self bailing cockpits.

REF	Ø EXT	Ø INT	Icon
GS30093	70 mm	33 mm	1

GOLDENSHIP



Fabricada en plástico y válvula termoplástica. / Manufactured in white plastic with tough thermoplastic flapper. / In plastica con valvola termoplastica. Fácil instalación sobre tubos de desagüe. / Easy to install over drain tubes. Di facile installazione per i tubi di scarico.

REF	Ø EXT	Ø INT	Icon
THDBS-2B	70 mm	33 mm	1

MARINE



Fabricada en plástico transparente y bola de bloqueo interna. / Manufactured in clear plastic with Flow-Max ball. / In plastica trasparente. Fácil instalación sobre tubos de desagüe. / Easy to install over drain tubes. Di facile installazioe per i tubi di scarico.

REF	Ø EXT	Ø INT	Icon
THFMS-1-0	76 mm	33 mm	1

MARINE





**TAPÓN DESAGÜE
DRAIN PLUG
TAPPI AD ESPANSIONE**



Tapón de cierre a presión. Fabricado en acero inox y neopreno. **Manufactured in stainless steel and neoprene.** **Tappo di chiusura a pressione. In acciaio inox e neoprene**

REF	Ø (mm)	
GS30301	23	1



Tapón de cierre a presión. Fabricado en acero inox y goma. **Manufactured in stainless steel and rubber. For thru hulls.** **Tappo di chiusura a pressione. In acciaio inox e gomma.**

REF	Ø (mm)	
GS30324	23	1
GS30323	34	1
GS30325	42	1



**DESAGÜE CON TAPON
DRAIN PLUG WITH SOCKET
OMBRINALE**



Tapón roscado. Fabricado en acero inox AISI 316. **Stainless steel AISI-316 cast flange and plug.** **Ombrinale. In acciaio inox AISI-316**

REF	A (mm)	B (mm)	C (mm)	
GS30328	54	24	12	1
GS30329	64	31	19	1



Tapón roscado. Fabricado en latón pulido. **Brass drain plug.** **Ombrinale. In ottone.**

REF	A (mm)	B (mm)	C (mm)	
GS30326	54	24	12	1



Tapón roscado. Fabricado en material plástico. **Nylon base with a captured drain plug.** **Ombrinale. In plastica.**

REF	
GS30314	1
GS30315	1
GS30336	1
GS30337	1

GS30314
GS30315



GS30336
GS30337

Tapón roscado. Fabricado en inox AISI-316. **Stainless steel AISI-316 cast flange and plug.** **Ombrinale. In acciaio inox AISI 316**

REF	Ø (mm)	Completo	Drain Et plug	Completo	
GS30312	50,8	Completo	Drain Et plug	Completo	1
GS30313	50,8	Tapón	Plug	Tappo	1



Tapón roscado. Fabricado en latón pulido. **Brass cast flange and plug.** **Ombrinale. In ottone lucido**

REF	Ø	Completo	Drain Et plug	Completo	
GS30310	50,8 mm	Completo	Drain Et plug	Completo	1
GS30311	50,8 mm	Tapón	Plug	Tappo	1

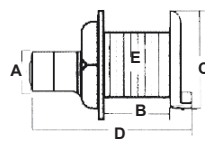


**DESAGÜE BAÑERA
STALON COCKPIT DRAIN
SCARICO A MARE**



Fabricado en nylon reforzado con fibra de vidrio (66-30%) y embellecedor exterior estampado de acero inox AISI 316. **Manufactured in nylon (66-30%) glass filled body and S.S.316 stamped face.** **In nylon con fibra di vetro (66-30%) e stampo esterno in acciaio inox AISI 316**

REF	A (mm)	B (mm)	C (mm)	D (mm)	E (mm)	
GS30338	38	45	60	128	55	1
GS30339	51	45	60	128	55	1



Fabricado en nylon. **Manufactured in plastic.** **In nylon.**

REF	Ø EXT	Ø INT		
GS30319	30 mm	23 mm	80 mm	1



**DESAGÜE BAÑERA 45°
DRAIN GRATE 45°
SCARICO A MARE 45°**



Fabricado en acero inox AISI-316. Con bola de bloqueo interna. **Stainless steel 316 with 45° adapter for hose.** **In acciaioinox AISI 316. Autosvuotante**

REF	Ø EXT		
GS30335	92 mm	35 mm	1



**DESAGÜE BAÑERA 90°
DRAIN GRATE 90°
SCARICO A MARE 90°**



Fabricado en plástico color blanco. Válvula antirretorno incorporada. **Cockpit scupper drain. White plastic with check ball valve.** **In plastica bianca. Valvola antirritorno incorporata.**

REF	Ø	
THCSD-92	90° 38 mm 1 1/2"	1



DESAGÜE BAÑERA 90°
DRAIN GRATE 90°
SCARICO A MARE 90°



Fabricado en acero inox AISI-316. Codo a 90° con adaptador a manguera.
Stainless steel 316 with 90° adapter for hose.
In acciaio inox AISI 316. Curva 90° con adattatore del tubo.

REF	A (mm)	B (mm)	C (mm)	D (mm)	
GS30305	25	15	36	42	1
GS30306	32	18	50	70	1
GS30307	38	18	50	70	1



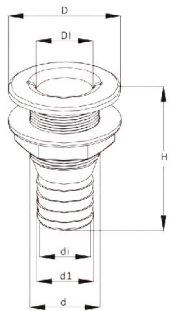
PASACASCOS • THRU HULL • PASSASCAFO

PASACASCOS
THRU HULL SCUPPER
PASSASCAFO



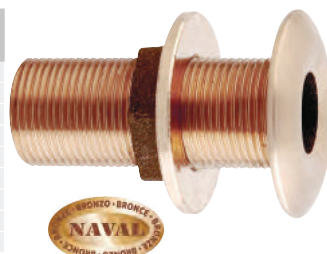
Fabricado en nylon. Manufactured in nylon. In nylon.

REF	Ø	H (mm)	D (mm)	D1 (mm)	d (mm)	d1 (mm)	di (mm)	
SFDS1062501	5/8"	73.5	42	17	23.5	16	10	1
SFDS1075001	3/4"	80	50.5	19	27	19	11.5	1
SFDS1100001	1"	93	61	26	33	25.5	18	1
SFDS1125001	1 1/4"	97	67.5	33	41	32	24	1
SFDS1150001	1 1/2"	102	75	47	46.5	38.5	28	1

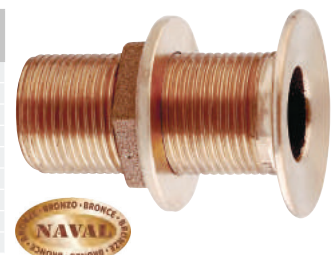


Fabricado en Bronce Naval. Made in naval Bronze. In Bronzo navale

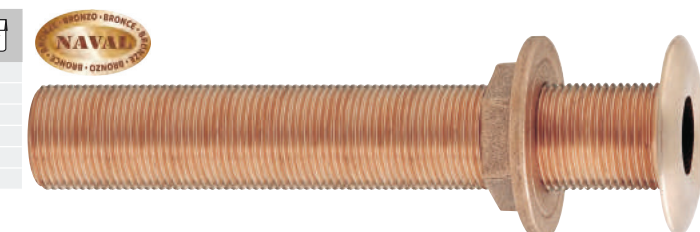
REF		(cm)	
GS30609	1/2"	6,30	1
GS30610	3/4"	7,10	1
GS30611	1"	7,60	1
GS30612	1 1/4"	8,15	1
GS30613	1 1/2"	8,45	1
GS30614	2"	10,00	1
GS30615	2 1/2"	13,20	1
GS30616	3"	16,00	1
GS30617	4"	20,90	1



REF		(cm)	
GS30618	1/2"	6,20	1
GS30619	3/4"	7,10	1
GS30620	1"	7,60	1
GS30621	1 1/4"	8,15	1
GS30622	1 1/2"	8,30	1
GS30623	2"	10,00	1
GS30624	2 1/2"	13,00	1
GS30625	3"	15,85	1
GS30626	4"	21,00	1



REF		(cm)	
GS30627	1"	24,00	1
GS30628	1 1/4"	24,00	1
GS30629	1 1/2"	24,00	1
GS30630	2"	24,00	1
GS30631	2 1/2"	24,00	1
GS30632	3"	24,00	1





Fabricado en acero inox AISI-316. Stainless steel 316.

In acciaio inox AISI 316

REF			
GS30208	3/8"	1	
GS30209	1/2"	1	
GS30210	3/4"	1	
GS30211	1"	1	
GS30212	1 1/4"	1	
GS30213	1 1/2"	1	
GS30214	2"	1	



GOLDENSHIP

REF			
GS30370	3/8"	1	
GS30371	1/2"	1	
GS30372	3/4"	1	
GS30373	1"	1	
GS30374	1 1/4"	1	
GS30375	1 1/2"	1	



GOLDENSHIP

REF			
GS30215	3/8"	15 mm	1
GS30216	1/2"	19 mm	1
GS30217	3/4"	25 mm	1
GS30218	1"	30 mm	1
GS30219	1 1/4"	39 mm	1
GS30220	1 1/2"	45 mm	1



GOLDENSHIP

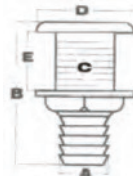
Fabricado en nylon reforzado con fibra de vidrio (66-30%) y embellecedor exterior estampado de acero inox AISI 316

Manufactured in reinforced nylon with a S.S. 316 stamped face.

In nylon rinforzato con fibra di vetro (66.30%) e stampo esterno in acciaio inox AISI 316

REF	Ø	A (mm)	B (mm)	C (mm)	D (mm)	E (mm)	
GS30343	3/4"	19	86	33	48	28	1
GS30344	1"	26	86	33	48	28	1
GS30345	1 1/4"	32	103	41	60	33	1
GS30346	1 1/2"	38	103	41	60	33	1
GS30347	2"	52	130	56	82	46	1

GOLDENSHIP



Fabricado en plástico cromado. Para utilizar sobre la línea de flotación.

Chrome plated plastic. For above waterline use.

In plastica cromata. Da utilizzare sopra la linea di galleggiamento

REF			
THTH-750CP	19 mm	3/4"	1
THTH-1200CP	29 mm	1 1/8"	1



Fabricado en latón.

Manufactured in brass.

In ottone

REF			
GS30051	1/2"	1	
GS30052	3/4"	1	
GS30053	1"	1	
GS30054	1 1/4"	1	
GS30055	1 1/2"	1	
GS30056	2"	1	
GS30057	2 1/2"	1	
GS30058	3"	1	



GOLDENSHIP

REF			
GS30360	3/8"	1	
GS30361	1/2"	1	
GS30362	3/4"	1	
GS30363	1"	1	
GS30364	1 1/4"	1	
GS30365	1 1/2"	1	
GS30366	2"	1	



GOLDENSHIP

Fabricado en plástico blanco.

Made in white plastic.

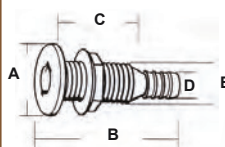
In plastica bianca

REF			
GS30080	5/8"	16 mm	1
GS30081	3/4"	19 mm	1
GS30082	1"	25 mm	1
GS30083	1 1/4"	30 mm	1
GS30084	1 1/2"	38 mm	1

GOLDENSHIP



REF	A (mm)	B (mm)	C (mm)	D (mm)	E (mm)	
THTH-502	38	78	45	12,7	25,4	1
THTH-652	41	86	45	16	25,4	1
THTH-752	38	78	45	19	25,4	1
THTH-1002	48	89	41	25,4	35	1
THTH-1202	48	89	44	29	35	1
THTH-1502	73	89	44	38	52	1



Fabricado en latón cromado

Manufactured in chromed brass.

In ottone cromato

REF			
GS30070	3/8"	13 mm	1
GS30071	1/2"	16 mm	1
GS30072	3/4"	22 mm	1
GS30073	1"	30 mm	1
GS30074	1 1/4"	38 mm	1
GS30075	1 1/2"	43 mm	1
GS30076	2"	60 mm	1

GOLDENSHIP



Fabricado en plástico blanco. Especialmente diseñado para las bombas RULE.

White high impact plastic. Specially designed for RULE pumps.

In plastica bianca. Disegnato principalmente per le pompe RULE

REF			
RU61S	19 mm	3/4"	1

rule





PASACASCOS 90°
90° THRU HULL
PASSASCAFO 90°

Fabricado en plástico cromado.
Para utilizar sobre la línea de flotación.

Chrome plated plastic.
For above waterline use.

In plastica cromata.
Da utilizzare sopra la
línea di galleggiamento.


REF		
THTH-7590CP	19 mm 3/4"	1
THTH-1290CP	29 mm 1 1/8"	1



Fabricado en plástico blanco.
Desmontable.
Doble tuerca.

White high impact plastic.
Double nut.

In plastica bianca.
Smontabile.
Doppio bullone.

REF	A (mm)	B (mm)	C (mm)	D (mm)	E (mm)	
THTH-92	41	67	22	19	25,4	1




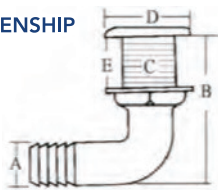
PASACASCOS CON VÁLVULA
THRU HULL SCUPPER
PASSASCAFO CON VALVOLA

Fabricado en nylon reforzado con fibra de vidrio (66-30%) y embellecedor exterior estampado de acero inox AISI 316

Manufactured in reinforced nylon with a S.S. 316 stamped face.

In nylon rinforzato con fibra di vetro (66-33%) e stampo esterno in acciaio inox AISI 316

REF	Ø	A (mm)	B (mm)	C (mm)	D (mm)	E (mm)	
GS30340	3/4"	19	81	33	48	28	1
GS30341	1 1/8"	26	115	40	60	28	1
GS30342	1 1/2"	38	119	40	60	33	1



Fabricado en acero inox AISI 316.
Válvula antirretorno incorporada.

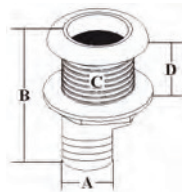
Manufactured in stainless steel AISI 316 with a PVC flapper valve.

In acciaio inox AISI 316.
Valvola antirretorno incorporata.

REF		
GS30332	38 mm 1 1/2"	1



REF	Ø	A (mm)	B (mm)	C (mm)	D (mm)	
GS30333	1 1/2"	38	106	55	35	1




Fabricado en plástico blanco.

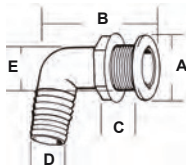
Made in white plastic.

In plastica bianca.

REF			
GS30087	3/4"	20 mm	1
GS30088	1"	25 mm	1



REF	A (mm)	B (mm)	C (mm)	D (mm)	E (mm)	
THTH-7592	38	63	25,4	19	25,4	1
THTH-1292	48	89	29	29	35	1
THTH-1892	48	89	19	29	35	1
THTH-1592	73	108	41	38	52	1



Fabricado en nylon reforzado con fibra de vidrio (66-30%) y embellecedor exterior estampado de acero inox AISI 316.
Válvula de PVC.

Manufactured in reinforced nylon with a S.S. 316 stamped face.
with a PVC flapper valve.

In nylon rinforzato con fibra di vetro (66,30%) e stampo esterna in acciaio inox AISI 316.
Valvola in PVC

REF		
GS30331	38 mm 1 1/2"	1



Fabricado en nylon color blanco.
Válvula anti-retorno incorporada.

White nylon with rubber flapper valve.

Valvola in nylon color bianco.
Valvola antirretorno incorporata.

REF		
GS30330	38 mm 1 1/2"	1

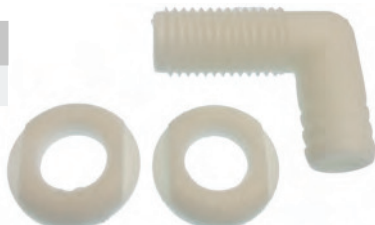


Fabricado en plástico blanco.
Especialmente diseñado para las bombas RULE.

White high impact plastic.
Specially designed for RULE pumps.

In plastica bianca.
Disegnato principalmente per le pompe RULE

REF		
RU61	19 mm 3/4"	1



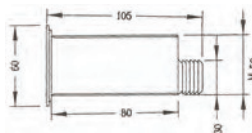
Fabricado en plástico color blanco.
Válvula antirretorno incorporada.

White plastic with rubber flapper valve.

In plastica colore bianco. Valvola antirritorno incorporata.

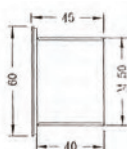
REF	Ø INT	Ø EXT	Ø INT	Ø INT
GS30320	105 mm	42 mm	30 mm	1

GOLDENSHIP



REF	Ø INT	Ø INT
GS30321	42 mm	1

GOLDENSHIP



PASACASCOS CON REJILLA
STRAINER INTAKE THRU HULL
PRESA A MARE

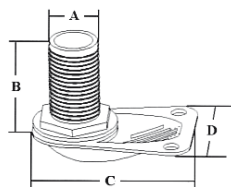
GOLDENSHIP

Fabricado en acero inox AISI 316.

Manufactured in stainless steel AISI 316

In acciaio inox AISI 316

REF	A	B (mm)	C (mm)	D (mm)	Ø INT
GS30245	1"	62	98	73	1
GS30246	1 1/4"	85	120	89	1
GS30247	1 1/2"	85	120	89	1



REF	Ø INT	Ø INT
GS30200	3/8"	1
GS30201	1/2"	1
GS30202	3/4"	1
GS30203	1"	1
GS30204	1 1/4"	1
GS30205	1 1/2"	1
GS30206	2"	1
GS30207	2 1/2"	1
GS30221	3"	1

Fabricado en latón.

Manufactured in brass.

In ottone.

REF	Ø INT	Ø INT
GS30021	1/2"	1
GS30022	3/4"	1
GS30023	1"	1
GS30024	1 1/4"	1
GS30025	1 1/2"	1
GS30026	2"	1
GS30027	2 1/2"	1
GS30028	3"	1



Fabricado en Bronce Naval

Made in naval Bronze.

In Bronzo navale

REF	Ø INT	Ø INT
GS30600	1/2"	1
GS30601	3/4"	1
GS30602	1"	1
GS30603	1 1/4"	1
GS30604	1 1/2"	1
GS30605	2"	1

MAESTRINI

REF	Ø INT	Ø INT
GS30606	2 1/2"	1
GS30607	3"	1
GS30608	4"	1

MAESTRINI



REJILLA TOMA DE AGUA
SCOOP STRAINER
GRIGLIA DI PRESA A MARE

GOLDENSHIP

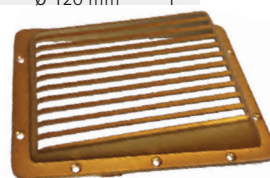
Fabricado en latón.

Manufactured in brass.

In ottone.

REF	Ø INT	Ø INT
GS30369	270 x 200 mm	1
GS30376	Ø 60 mm	1
GS30377	Ø 80 mm	1
GS30378	Ø 100 mm	1
GS30379	Ø 120 mm	1

GS30369



GS30376-79

REJILLA DE ACHIQUE
STRAINER
SUCCHIAROLA

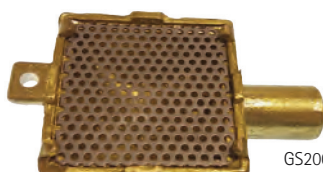
GOLDENSHIP

Fabricada en bronce con rejilla de acero inox.

Made of bronze with stainless steel frame.

In bronzo con griglia in acciaio inox.

REF	Ø INT	BASE	Orientation	Ø INT
GS20054	19 mm / 3/4"	57 x 57 mm	Vertical / Verticale	1
GS20055	19 mm / 3/4"	57 x 57 mm	Horizontal / Orizzontale	1



GS20055



GS20054



FONTANERÍA • PLUMBING • IDRAULICO

RECAMBIO MARINOS