

COJINETES DE BRONCE • BRASS BEARING • CUSCINETTI IN BRONZO

COJINETES EN BRONCE NAVAL Y GOMA DE NITRIL
BEARING IN NAVAL BRASS AND RUBBER
CUSCINETTI IN BRONZO NAVALE E GOMMA

Medidas en pulgadas Measures in inches Misure in pollici

REF	A (")	B (")	C (")	D (")
GS38560	1"	1 1/4"	4"	3/64"
GS38561	1"	1 1/2"	4"	1/8"
GS38562	1 1/8"	1 5/8"	4 1/2"	1/8"
GS38563	1 1/4"	1 3/4"	5"	1/8"
GS38564	1 3/8"	1 7/8"	5 1/2"	1/8"
GS38565	1 1/2"	2"	6"	1/8"
GS38566	1 5/8"	2 1/8"	6 1/2"	1/8"
GS38567	1 3/4"	2 3/8"	7"	1/8"
GS38568	1 7/8"	2 5/8"	7 1/2"	1/8"
GS38569	2"	2 5/8"	8"	1/8"
GS38570	2"	3"	8"	1/8"
GS38571	2 1/8"	3"	8 1/2"	1/8"
GS38572	2 1/4"	3"	9"	1/8"
GS38573	2 3/8"	3 1/4"	9 1/2"	1/8"
GS38574	2 1/2"	3 1/2"	10"	3/16"
GS38575	2 5/8"	3 3/8"	10 1/2"	1/8"
GS38576	2 3/4"	3 3/4"	11"	1/8"
GS38577	2 7/8"	3 3/4"	12"	1/8"
GS38578	3"	4"	12"	1/8"
GS38579	3 1/4"	4"	12"	1/8"
GS38580	3 3/8"	4 1/2"	13 1/2"	1/8"
GS38581	3 1/2"	4 1/2"	14"	1/8"
GS38582	3 5/8"	4 1/2"	14 1/2"	1/8"
GS38583	3 3/4"	4 1/2"	15"	1/8"
GS38584	3 7/8"	5 1/4"	16"	3/16"
GS38585	4"	5 1/4"	16"	3/16"
GS38586	4 1/8"	5 1/4"	16 1/2"	3/16"
GS38587	4 1/4"	5 1/2"	17"	3/16"
GS38588	4 3/8"	5 1/2"	17 1/2"	3/16"
GS38589	4 1/2"	5 1/2"	17 1/2"	3/16"
GS38590	4 5/8"	6 1/8"	18 1/2"	1/4"
GS38591	4 3/4"	6 1/8"	19"	1/4"
GS38592	4 7/8"	6 1/8"	19 1/2"	1/4"
GS38593	5"	6 1/8"	20"	1/4"

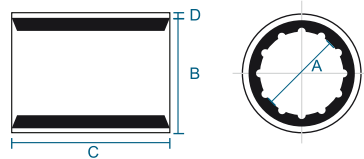
GOLDENSHIP

Medidas en milímetros Measures in millimeters Misure in millimetri

REF	A (mm)	B (mm)	C (mm)	D (mm)
GS38500	22	35	88	2.5
GS38502	25	35	100	2.5
GS38501	25	40	100	2.5
GS38503	28	38	112	2.5
GS38504	28	42	112	2.5
GS38505	30	40	120	2.5
GS38506	30	45	120	2.5
GS38507	32	45	128	2.5
GS38508	35	48	140	2.5
GS38509	35	50	140	2.5
GS38510	38	55	152	3.0
GS38511	40	55	160	3.0
GS38512	45	61	180	3.0
GS38513	45	65	180	3.0
GS38514	50	66	200	3.0
GS38515	50	70	200	3.0
GS38516	55	75	220	3.0
GS38517	60	80	240	3.0
GS38518	65	83	260	3.0
GS38519	65	85	260	3.0
GS38520	70	90	280	3.0
GS38521	75	95	300	3.5
GS38522	80	100	320	3.5
GS38523	85	105	340	3.5
GS38524	90	110	360	3.5
GS38525	100	125	400	5.0
GS38526	105	130	420	5.0
GS38527	110	135	440	5.0
GS38528	115	145	460	5.0
GS38529	120	155	480	6.5
GS38530	130	170	520	6.5
GS38531	140	180	560	6.5

Medidas en milímetros y pulgadas Measures in millimeters et inches Misure in millimetri e pollici

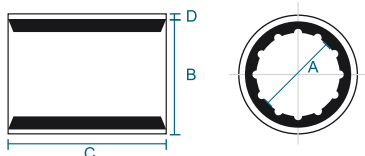
REF	A (mm)	B (")	C (")	D (")
GS38532	20	1 1/4"	3"	1/12"
GS38533	22	1 1/4"	3"	1/12"
GS38534	25	1 1/2"	4"	1/8"
GS38535	25	1 1/4"	4"	3/64"
GS38536	28	1 5/8"	4 1/2"	1/8"
GS38537	30	1 3/4"	5"	1/8"
GS38538	32	1 3/4"	5"	1/8"
GS38539	35	1 7/8"	5 1/2"	1/8"
GS38540	38	2"	6"	1/8"
GS38541	40	2 1/8"	6 1/2"	1/8"
GS38542	45	2 3/8"	7"	1/8"
GS38543	50	2 5/8"	8"	1/8"
GS38544	55	3"	9"	1/8"
GS38545	60	3 1/4"	9 1/2"	1/8"
GS38546	65	3 3/8"	10 1/2"	1/8"
GS38547	70	3 3/4"	11"	1/8"
GS38548	75	4"	12"	1/8"
GS38549	80	4"	12"	1/8"
GS38550	85	4 1/2"	13 1/2"	1/8"
GS38551	90	4 1/2"	14"	1/8"
GS38552	95	4 1/2"	15"	1/8"
GS38553	100	5 1/4"	16"	3/16"
GS38554	105	5 1/4"	16"	3/16"
GS38555	108	5 1/2"	17"	3/16"
GS38556	110	5 1/2"	17"	3/16"
GS38557	115	5 1/2"	18"	1/4"
GS38558	120	6 1/8"	19"	1/4"
GS38559	125	6 1/8"	20"	1/4"



Medidas en pulgadas Measures in inches Misure in pollici

REF	A (")	B (")	C (")	D (mm)
CEFPS025031	1"	1 1/4"	4"	0.88
CEFPS025038	1"	1 1/2"	4"	2.05
CEFPS028041	1 1/8"	1 5/8"	4 1/2"	1.55
CEFPS031044	1 1/4"	1 3/4"	5"	1.73
CEFPS034047	1 3/8"	1 7/8"	5 1/2"	1.81
CEFPS038050	1 1/2"	2"	6"	1.9
CEFPS040053	1 5/8"	2 1/8"	6 1/2"	1.99
CEFPS044060	1 3/4"	2 3/8"	7"	2.16
CEFPS047066	1 7/8"	2 5/8"	7 1/2"	2.34
CEFPS050066	2"	2 5/8"	8"	2.34
CEFPS053076	2 1/8"	3"	8 1/2"	3.1
CEFPS057076	2 1/4"	3"	9"	2.1
CEFPS060082	2 3/8"	3 1/4"	9 1/2"	2.78
CEFPS063082	2 1/2"	3 1/4"	10"	2.78
CEFPS066085	2 5/8"	3 3/8"	10 1/2"	2.86
CEFPS069095	2 3/4"	3 3/4"	11"	4.13
CEFPS073095	2 7/8"	3 3/4"	12"	4.13
CEFPS076101	3"	4"	12"	2.8

cef



Medidas en milímetros Measures in millimeters Misure in millimetri

REF	A (mm)	B (mm)	C (mm)	D (mm)
CEFMS025035	25	35	100	1,5
CEFMS025040	25	40	100	2
CEFMS028038	28	38	112	2
CEFMS028042	28	42	112	2,5
CEFMS030040	30	40	120	1,5
CEFMS030045	30	45	120	2
CEFMS032045	32	45	128	2,5
CEFMS035048	35	48	140	2
CEFMS035050	35	50	140	2
CEFMS038055	38	55	152	2,5
CEFMS040056	40	56	160	2
CEFMS044068	44	68	180	4
CEFMS045061	45	61	180	2,5
CEFMS045065	45	65	180	4
CEFMS050066	50	66	200	2
CEFMS050070	50	70	200	3
CEFMS055073	55	73	220	4
CEFMS055075	55	75	220	2,5
CEFMS060078	60	78	240	2,5
CEFMS060080	60	80	240	2,5
CEFMS065083	65	83	260	3
CEFMS065085	65	85	260	2,5
CEFMS070090	70	90	280	2,5
CEFMS075096	75	96	300	3
CEFMS080100	80	100	320	2,5
CEFMS080102	80	102	320	3
CEFMS085110	85	110	340	3
CEFMS090115	90	115	360	3,5
CEFMS095123	95	123	380	4
CEFMS100130	100	130	400	3,5

Medidas en milímetros y pulgadas Measures in millimeters et inches Misure in millimetri e pollici

REF	A (mm)	B (")	C (")	D (mm)
CEFPRO20031	20	1 1/4"	3"	1,88
CEFPRO22031	22	1 1/4"	3"	1,38
CEFPRO25031	25	1 1/4"	4"	0,88
CEFPRO25038	25	1 1/2"	4"	1,55
CEFPRO28041	28	1 5/8"	4 1/2"	2,14
CEFPRO30044	30	1 3/4"	5"	1,73
CEFPRO32044	32	1 3/4"	5"	1,73
CEFPRO35047	35	1 7/8"	5 1/2"	1,81
CEFPRO38050	38	2"	6"	1,9
CEFPRO40053	40	2 1/8"	6 1/2"	1,99
CEFPRO45060	45	2 3/8"	7"	2,16
CEFPRO50066	50	2 5/8"	8"	2,34
CEFPRO55076	55	3"	9"	2,1
CEFPRO60082	60	3 1/4"	9 1/2"	2,78
CEFPRO65085	65	3 3/8"	10 1/2"	2,86
CEFPRO70095	70	3 3/4"	11"	2,63
CEFPRO75101	75	4"	12"	2,8
CEFPRO80101	80	4"	12"	2,8
CEFPRO85114	85	4 1/2"	13 1/2"	3,15
CEFPRO90114	90	4 1/2"	14"	3,15
CEFPRO95114	95	4 1/2"	15"	3,15
CEFPR100133	100	5 1/4"	15 3/4"	4,18



COJINETES DE FIBRA • FIBER BEARING • CUSCINETTI IN FIBRA

COJINETE DE FIBRA FIBER BEARING CUSCINETTO IN FIBRA

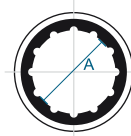
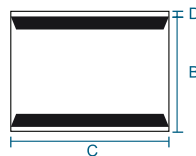


Fabricado con resinas
fenólicas y goma
resistente a los aceites.

Manufactured with
phenolic resins and oil
resistant rubber.

Realizzato in resina
fenolica, resistente
all'olio.

REF	A (mm)	B (mm)	C (mm)	PARED WALL MURO (mm)
GS38594	25	40	100	2.5
GS38595	30	45	120	2.5
GS38596	35	50	140	2.5
GS38597	38	55	152	3.0
GS38598	40	55	160	3.0
GS38599	45	65	180	3.0
GS38600	50	70	200	3.0
GS38601	55	75	220	3.0
GS38602	60	80	240	3.0



PRENSAESTOPAS • SHAFT SEALS • PREMISTOPPA

GEN II



El prensaestopas GEN II está equipado con muelle de acero inox AISI-316 que proporciona a las superficies de sellado una presión constante. Para compensar cualquier ligero desalineamiento, el aro de junta se monta en el eje y está en contacto constante con la superficie de la junta de grafito previniendo cualquier paso de agua. Al no haber contacto de metal con metal, se elimina cualquier posibilidad de electrolisis.

The GEN II uses a 316-marine grade stainless steel spring to provide pressure to the seal surface. Together, the spring and seal ring rotate along with the shaft, and remain secured in the Clamp/Pressure housing. Dual U-cup seals, which also rotate with the shaft, are seated in the inside of the seal ring. Because there's virtually no metal-to-metal contact, you eliminate the risk of electrolysis.

Il premistoppa GEN II è fornito con molle in acciaio inox AISI-316 e forniscono alle superfici una pressione costante. Per compensare qualunque disallineamento, l'anello della guarnizione si monta nell'asse e rimane in contatto con la superficie della guarnizione di grafito. Non essendoci più il contatto metallo con metallo, si elimina la possibilità di elettrolisi.

REF	EJE SHAFT ASSE Ø (")	Ø EXT (")
LASG-112-212	1 1/2"	2 1/2"
LASG-112-214	1 1/2"	2 3/4"
LASG-112-234	1 1/2"	2 3/4"
LASG-112-238	1 1/2"	2 3/8"
LASG-112-258	1 1/2"	2 5/8"
LASG-112-278	1 1/2"	2 7/8"
LASG-112-3	1 1/2"	3"
LASG-112-312	1 1/2"	3 1/2"
LASG-112-314	1 1/2"	3 1/4"
LASG-114-134	1 1/4"	1 3/4"
LASG-114-2	1 1/4"	2"
LASG-114-212	1 1/4"	2 1/2"
LASG-114-214	1 1/4"	2 1/4"
LASG-114-234	1 1/4"	2 3/4"
LASG-114-238	1 1/4"	2 3/8"
LASG-114-258	1 1/4"	2 5/8"
LASG-114-278	1 1/4"	2 7/8"
LASG-114-3	1 1/4"	3"
LASG-114-312	1 1/4"	3 1/2"
LASG-118-134	1 1/8"	1 3/4"
LASG-118-2	1 1/8"	2"
LASG-118-212	1 1/8"	2 1/2"
LASG-118-214	1 1/8"	2 1/4"
LASG-118-234	1 1/8"	2 3/4"
LASG-118-238	1 1/8"	2 3/8"
LASG-118-3	1 1/8"	3"
LASG-134-212	1 3/4"	2 1/2"
LASG-134-234	1 3/4"	2 3/4"
LASG-134-258	1 3/4"	2 5/8"
LASG-134-278	1 3/4"	2 7/8"
LASG-134-3	1 3/4"	3"
LASG-134-312	1 3/4"	3 1/2"
LASG-134-314	1 3/4"	3 1/4"
LASG-134-334	1 3/4"	3 3/4"
LASG-134-4	1 3/4"	4"
LASG-134-412	1 3/4"	4 1/2"
LASG-138-2	1 3/8"	2"
LASG-138-212	1 3/8"	2 1/2"
LASG-138-214	1 3/8"	2 1/4"
LASG-138-234	1 3/8"	2 3/4"
LASG-138-238	1 3/8"	2 3/8"

REF	EJE SHAFT ASSE Ø (")	Ø EXT (")
LASG-138-278	1 3/8"	2 7/8"
LASG-138-3	1 3/8"	3"
LASG-138-312	1 3/8"	3 1/2"
LASG-200-212	2"	2 1/2"
LASG-200-234	2"	2 3/4"
LASG-200-278	2"	2 7/8"
LASG-200-3	2"	3"
LASG-200-312	2"	3 1/2"
LASG-200-314	2"	3 1/4"
LASG-200-334	2"	3 3/4"
LASG-200-4	2"	4"
LASG-200-412	2"	4 1/2"
LASG-212-312	2 1/2"	3 1/2"
LASG-212-314	2 1/2"	3 1/4"
LASG-212-334	2 1/2"	3 3/4"
LASG-212-4	2 1/2"	4"
LASG-212-412	2 1/2"	4 1/2"
LASG-212-5	2 1/2"	5"
LASG-212-512	2 1/2"	5 1/2"
LASG-214-234	2 1/4"	2 3/4"
LASG-214-278	2 1/4"	2 7/8"
LASG-214-3	2 1/4"	3"
LASG-214-312	2 1/4"	3 1/2"
LASG-214-314	2 1/4"	3 1/4"
LASG-214-334	2 1/4"	3 3/4"
LASG-214-4	2 1/4"	4"
LASG-214-412	2 1/4"	4 1/2"
LASG-234-312	2 3/4"	3 1/2"
LASG-234-314	2 3/4"	3 1/4"
LASG-234-334	2 3/4"	3 3/4"
LASG-234-4	2 3/4"	4"
LASG-234-412	2 3/4"	4 1/2"
LASG-234-5	2 3/4"	5"
LASG-234-512	2 3/4"	5 1/2"
LASG-234-6	2 3/4"	6"
LASG-300-4	3"	4"
LASG-300-412	3"	4 1/2"
LASG-300-5	3"	5"
LASG-300-512	3"	5 1/2"
LASG-300-6	3"	6"

REF	EJE SHAFT ASSE Ø (mm)	Ø EXT (mm)
LASG-30-51	30	51
LASG-30-60	30	60
LASG-30-57	30	57
LASG-30-64	30	64
LASG-35-51	35	51
LASG-35-57	35	57
LASG-35-60	35	60
LASG-35-64	35	64
LASG-40-57	40	57
LASG-40-64	40	64
LASG-40-66	40	66
LASG-40-70	40	70
LASG-40-73	40	73
LASG-40-76	40	76
LASG-40-90	40	90
LASG-45-70	45	70
LASG-45-73	45	73
LASG-45-76	45	76
LASG-45-89	45	89
LASG-50-73	50	73
LASG-50-76	50	76
LASG-50-90	50	90
LASG-50-102	50	102
LASG-55-73	55	73
LASG-55-76	55	76
LASG-55-89	55	89
LASG-55-102	55	102
LASG-60-89	60	89

REF	EJE SHAFT ASSE Ø (mm)	Ø EXT (mm)
LASG-60-102	60	102
LASG-60-114	60	114
LASG-65-89	65	89
LASG-65-102	65	102
LASG-65-114	65	114
LASG-65-127	65	127
LASG-70-102	70	102
LASG-70-114	70	114
LASG-70-127	70	127
LASG-75-102	75	102
LASG-75-114	75	114
LASG-75-127	75	127
LASG-80-114	80	114
LASG-80-127	80	127
LASG-80-140	80	140
LASG-85-127	85	127
LASG-85-140	85	140
LASG-85-152	85	152
LASG-90-127	90	127
LASG-90-140	90	140
LASG-90-152	90	152
LASG-90-168	90	168
LASG-100-140	100	140
LASG-100-152	100	152
LASG-100-168	100	168
LASG-100-178	100	178
LASG-100-203	100	203



CÁMARA MOTOR / CASCO • ENGINE CAMERA / HULL • CAMERA MOTORE / SCAFO

RECAMBIOS MARINOS

El prensaestopas DrySeal de diseño compacto se instala fácil y rápidamente. La retén interior diseñada para uso marino, se mantiene en su lugar mediante una platina en dos partes y asegurada al cuerpo exterior de polímeros. Este mantiene el retén en constante contacto con el eje, previniendo la entrada y/o salida de agua. Puede instalarse un nuevo retén sin necesidad de desmontar la unidad ó el eje. También un excelente prensaestopas para timón.

The Lasdrop DrySeal features a compact, economical lip seal design that can be installed quickly and easily. The self-adjusting inner lip seal is held in place by a split-face plate and secured to a stationary durable copolymer housing. As in all Lasdrop seals, the unit incorporates a cuttlass bearing in the housing to keep the unit properly aligned with the shaft. The DrySeal has an optional back-up seal that can be installed without removing the unit or the shaft. Also and excellent rudder shaft seal.

Il premistoppa DrySeal è veloce e di facile installazione. La guarnizione interna ad uso marino, è tenuta in posizione tramite una piastra in due punti e assicurata al corpo esterno del polimero. Questo mantiene la guarnizione in contatto con l'asse, non consentendo l'entrata e l'uscita dell'acqua. È possibile installare una nuova guarnizione se si deve smontare l'asse o l'intera unità.

REF	EJE SHAFT ASSE Ø (")	Ø EXT (")
LASD-034-158	3/4"	1 5/8"
LASD-034-134	3/4"	1 3/4"
LASD-034-178	3/4"	1 7/8"
LASD-034-2	3/4"	2"
LASD-078-158	7/8"	1 5/8"
LASD-078-134	7/8"	1 3/4"
LASD-078-2	7/8"	2"
LASD-100-158	1"	1 5/8"
LASD-100-134	1"	1 3/4"
LASD-100-178	1"	1 7/8"
LASD-100-2	1"	2"
LASD-118-134	1 1/8"	1 3/4"
LASD-118-178	1 1/8"	1 7/8"
LASD-118-2	1 1/8"	2"
LASD-118-214	1 1/8"	2 1/4"
LASD-118-238	1 1/8"	2 3/8"
LASD-118-212	1 1/8"	2 1/2"
LASD-118-3	1 1/8"	3"
LASD-114-134	1 1/4"	1 3/4"
LASD-114-2	1 1/4"	2"
LASD-114-214	1 1/4"	2 1/4"
LASD-114-238	1 1/4"	2 3/8"
LASD-114-212	1 1/4"	2 1/2"
LASD-114-258	1 1/4"	2 5/8"
LASD-114-234	1 1/4"	2 3/4"
LASD-114-278	1 1/4"	2 7/8"
LASD-114-3	1 1/4"	3"
LASD-114-312	1 1/4"	3 1/2"
LASD-138-2	1 3/8"	2"
LASD-138-214	1 3/8"	2 1/4"
LASD-138-238	1 3/8"	2 3/8"
LASD-138-212	1 3/8"	2 1/2"
LASD-138-234	1 3/8"	2 3/4"
LASD-138-278	1 3/8"	2 7/8"
LASD-138-3	1 3/8"	3"

REF	EJE SHAFT ASSE Ø (")	Ø EXT (")
LASD-138-312	1 3/8"	3 1/2"
LASD-112-214	1 1/2"	2 1/4"
LASD-112-212	1 1/2"	2 1/2"
LASD-112-258	1 1/2"	2 5/8"
LASD-112-234	1 1/2"	2 3/4"
LASD-112-278	1 1/2"	2 7/8"
LASD-112-3	1 1/2"	3"
LASD-112-312	1 1/2"	3 1/2"
LASD-134-212	1 3/4"	2 1/2"
LASD-134-234	1 3/4"	2 3/4"
LASD-134-278	1 3/4"	2 7/8"
LASD-134-3	1 3/4"	3"
LASD-134-314	1 3/4"	3 1/4"
LASD-134-312	1 3/4"	3 1/2"
LASD-134-334	1 3/4"	3 3/4"
LASD-134-4	1 3/4"	4"
LASD-134-412	1 3/4"	4 1/2"
LASD-200-234	2"	2 3/4"
LASD-200-278	2"	2 7/8"
LASD-200-3	2"	3"
LASD-200-314	2"	3 1/4"
LASD-200-312	2"	3 1/2"
LASD-200-334	2"	3 3/4"
LASD-200-4	2"	4"
LASD-200-412	2"	4 1/2"
LASD-214-278	2 1/4"	2 7/8"
LASD-214-3	2 1/4"	3"
LASD-214-314	2 1/4"	3 1/4"
LASD-214-312	2 1/4"	3 1/2"
LASD-214-334	2 1/4"	3 3/4"
LASD-214-4	2 1/4"	4"
LASD-214-412	2 1/4"	4 1/2"
LASD-212-314	2 1/2"	3 1/4"
LASD-212-312	2 1/2"	3 1/2"
LASD-212-334	2 1/2"	3 3/4"

REF	EJE SHAFT ASSE Ø (")	Ø EXT (")
LASD-212-4	2 1/2"	4"
LASD-212-412	2 1/2"	4 1/2"
LASD-212-5	2 1/2"	5"
LASD-212-512	2 1/2"	5 1/2"
LASD-234-312	2 3/4"	3 1/2"
LASD-234-334	2 3/4"	3 3/4"
LASD-234-4	2 3/4"	4"
LASD-234-412	2 3/4"	4 1/2"
LASD-234-5	2 3/4"	5"
LASD-234-512	2 3/4"	5 1/2"
LASD-234-6	2 3/4"	6"
LASD-300-4	3"	4"
LASD-300-412	3"	4 1/2"
LASD-300-5	3"	5"
LASD-300-512	3"	5 1/2"
LASD-300-6	3"	6"
LASD-314-412	3 1/4"	4 1/2"
LASD-314-5	3 1/4"	5"
LASD-314-512	3 1/4"	5 1/2"
LASD-314-6	3 1/4"	6"
LASD-312-5	3 1/2"	5"
LASD-312-512	3 1/2"	5 1/2"
LASD-312-6	3 1/2"	6"
LASD-312-612	3 1/2"	6 1/2"
LASD-312-658	3 1/2"	6 5/8"
LASD-334-5	3 3/4"	5"
LASD-334-512	3 3/4"	5 1/2"
LASD-334-6	3 3/4"	6"
LASD-334-612	3 3/4"	6 1/2"
LASD-334-658	3 3/4"	6 5/8"
LASD-334-7	3 3/4"	7"
LASD-400-5	4"	5"
LASD-400-512	4"	5 1/2"
LASD-400-6	4"	6"
LASD-400-612	4"	6 1/2"

RETÉN DE RECAMBIO
SPARE SEALS
GUARNIZIONE RICAMBIO

REF	EJE SHAFT ASSE Ø (")
LASEX-34	3/4"
LASEX-78	7/8"
LASEX-100	1"
LASEX-118	1 1/8"
LASEX-114	1 1/4"
LASEX-138	1 3/8"
LASEX-112	1 1/2"
LASEX-134	1 3/4"
LASEX-200	2"
LASEX-214	2 1/4"
LASEX-212	2 1/2"
LASEX-234	2 3/4"
LASEX-300	3"
LASEX-314	3 1/4"
LASEX-312	3 1/2"
LASEX-334	3 3/4"
LASEX-400	4"
LASEX-412	4 1/2"
LASEX-500	5"
LASEX-512	5 1/2"
LASEX-600	6"



REF	EJE SHAFT ASSE Ø (mm)	Ø EXT (mm)
LASD-20-45	20	45
LASD-20-51	20	51
LASD-22-45	22	45
LASD-22-51	22	51
LASD-25-45	25	45
LASD-25-51	25	51
LASD-30-51	30	51
LASD-30-57	30	57
LASD-30-64	30	64
LASD-35-51	35	51
LASD-35-57	35	57
LASD-35-64	35	64
LASD-35-66	35	66
LASD-35-76	35	76
LASD-35-89	35	89
LASD-40-57	40	57
LASD-40-64	40	64
LASD-40-66	40	66
LASD-40-73	40	73
LASD-40-76	40	76
LASD-40-89	40	89
LASD-45-66	45	66
LASD-45-73	45	73
LASD-45-76	45	76
LASD-45-89	45	89
LASD-50-66	50	66
LASD-50-76	50	76
LASD-50-90	50	90
LASD-50-102	50	102
LASD-55-73	55	73
LASD-55-76	55	76
LASD-55-89	55	89
LASD-55-102	55	102
LASD-55-114	55	114
LASD-60-73	60	73

REF	EJE SHAFT ASSE Ø (mm)	Ø EXT (mm)
LASD-60-76	60	76
LASD-60-89	60	89
LASD-60-102	60	102
LASD-60-114	60	114
LASD-65-76	65	76
LASD-65-89	65	89
LASD-65-102	65	102
LASD-65-114	65	114
LASD-65-127	65	127
LASD-65-140	65	140
LASD-70-102	70	102
LASD-70-114	70	114
LASD-70-127	70	127
LASD-70-140	70	140
LASD-75-102	75	102
LASD-75-114	75	114
LASD-75-127	75	127
LASD-75-140	75	140
LASD-80-102	80	102

REF	EJE SHAFT ASSE Ø (mm)	Ø EXT (mm)
LASD-80-114	80	114
LASD-80-127	80	127
LASD-80-140	80	140
LASD-80-152	80	152
LASD-85-114	85	114
LASD-85-127	85	127
LASD-85-140	85	140
LASD-85-152	85	152
LASD-90-127	90	127
LASD-90-140	90	140
LASD-90-152	90	152
LASD-90-168	90	168
LASD-100-127	100	127
LASD-100-140	100	140
LASD-100-152	100	152
LASD-100-168	100	168
LASD-100-178	100	178
LASD-100-203	100	203

RETÉN DE RECAMBIO
SPARE SEALS
GUARNIZIONE RICAMBIO

REF	EJE SHAFT ASSE Ø (mm)
LASEX-20	20
LASEX-22	22
LASEX-25	25
LASEX-30	30
LASEX-35	35
LASEX-40	40
LASEX-45	45
LASEX-50	50
LASEX-55	55
LASEX-60	60
LASEX-70	70
LASEX-75	75
LASEX-80	80
LASEX-85	85
LASEX-90	90
LASEX-100	100
LASEX-400	4"
LASEX-412	4 1/2"
LASEX-500	5"
LASEX-512	5 1/2"
LASEX-600	6"

