

REJILLAS-VALVULAS / Accessories

VALVULA ANTI-RETORNO NON-RETURN VALVE

GOLDENSHIP



Fabricada en plástico anticorrosión.
Polypropilene with a built-in rubber flapper.

| Ref. | Mang./Hose | Envase/Pack |
|---------|-------------|--------------|
| GS20063 | 25-32-38 mm | 1 x skinpack |
| GS20064 | 13-20-26 mm | 1 x skinpack |

VALVULA ANTI-RETORNO NON-RETURN VALVE

GOLDENSHIP



Fabricada en plástico anticorrosión.
Polypropilene with a built-in rubber flapper.

| Ref. | Mang./Hose | Envase/Pack |
|---------|------------|--------------|
| GS20065 | 25-38 mm | 1 x skinpack |

VALVULA ANTI-RETORNO NON-RETURN VALVE

Fabricada en plástico anticorrosión.
Polypropilene with a built-in thermo-plastic flapper.



| Ref. | Mang./Hose | Envase/Pack |
|------------|----------------|--------------|
| THILS-750 | 19 mm / 3/4" | 1 x skinpack |
| THILS-1200 | 29 mm / 1-1/8" | 1 x skinpack |
| THILS-1500 | 38 mm / 1-1/2" | 1 x skinpack |

KIT DESAGÜE ACHIQUE BILGE INSTALLATION KIT

GOLDENSHIP

Kit pasacascos para bombas de achique.

1 pasacascos nylon/ Thru-hull
1,8 m. manguera/Hose
2 abrazaderas/SS. Clamps



| Ref. | Mang./Hose | Envase/Pack |
|---------|-------------------|---------------|
| GS30098 | 19 mm. = 3/4" | 1 x bolsa/bag |
| GS30099 | 28,5 mm. = 1-1/8" | 1 x bolsa/bag |

REJILLA DE ACHIQUE STRAINER

V



Fabricada en bronce con rejilla de acero inox.
Made of bronze with stainless steel frame.

Base: 57 x 57 mm.

GOLDENSHIP

H



| Ref. | Mang./Hose | Envase/Pack |
|---------|-----------------------------|--------------|
| GS20054 | (V) Vertical 19 mm / 3/4" | 1 x skinpack |
| GS20055 | (H) Horizontal 19 mm / 3/4" | 1 x skinpack |

REJILLA DE ACHIQUE STRAINER

GOLDENSHIP



De plástico anti-choque.
Made of reinforced plastic.

| Ref. | Mang./Hose | Envase/Pack |
|---------|-----------------|--------------|
| GS20050 | 16 - 18 - 24 mm | 1 x skinpack |

VALVULA ANTI-SIFON VENTED LOOP

Para instalaciones inodoros y bombas bajo la línea de flotación.
Fabricada en nylon color negro.
For toilets and pumps installed below waterline. Made of reinforced plastic.



GOLDENSHIP

| Ref. | Mang./Hose | Envase/Pack |
|---------|----------------|--------------|
| GS50030 | 19 mm = 3/4" | 1 x skinpack |
| GS50032 | 25 mm = 1" | 1 x skinpack |
| GS50031 | 38 mm = 1-1/2" | 1 x skinpack |



VALVULAS / Valves

VALVULA DE BOLA BALL VALVE

Construidos en latón cromado y bola de acero inox con junta de teflón y maneta de aluminio.
Chromed brass case, stainless steel ball and metal handle.



GOLDENSHIP

| Ref. | Rosca/Thread | Envase/Pack |
|---------|--------------|---------------|
| GS30010 | 3/8" | 1 x bolsa/bag |
| GS30011 | 1/2" | 1 x bolsa/bag |
| GS30012 | 3/4" | 1 x bolsa/bag |
| GS30013 | 1" | 1 x bolsa/bag |
| GS30014 | 1 1/4" | 1 x bolsa/bag |
| GS30015 | 1 1/2" | 1 x bolsa/bag |
| GS30016 | 2" | 1 x bolsa/bag |
| GS30017 | 2 1/2" | 1 x bolsa/bag |

MANETA DE VALVULA HANDLE

Maneta de acero inoxidable. Recambio para las válvulas de bola de bronce cromado.
*Stainless steel handle.
Spare part for chromed brass valves.*



GOLDENSHIP

| Ref. | Para válvulas/For valves: | Envase/Pack |
|---------|---------------------------|---------------|
| GS30046 | 1/2" - 3/4" | 1 x bolsa/bag |
| GS30047 | 1" - 1 1/4" | 1 x bolsa/bag |
| GS30048 | 1 1/2" - 2" | 1 x bolsa/bag |
| GS30049 | 2 1/2" | 1 x bolsa/bag |

VALVULA 3 VIAS «Y» VALVE

Fabricado en nylon de alta resistencia. Para instalaciones de achique, inodoros, depósitos de agua, etc.
Made of strong nylon for instalations in bilges, water tanks, toilets, etc.



GOLDENSHIP

| Ref. | Mang./Hose | Envase/Pack |
|---------|----------------|---------------|
| GS20071 | 25 mm = 1" | 1 x bolsa/bag |
| GS20072 | 38 mm = 1-1/2" | 1 x bolsa/bag |

VALVULA 3 VIAS «Y» VALVE

Fabricado en nylon de alta resistencia. Para instalaciones de achique, inodoros, depósitos de agua, etc.
Made of strong nylon for instalations in bilges, water tanks, toilets, etc.



GOLDENSHIP

| Ref. | Mang./Hose | Envase/Pack |
|---------|----------------|---------------|
| GS20070 | 38 mm = 1-1/2" | 1 x bolsa/bag |

VALVULA DE BOLA BALL VALVE

Construidos en acero inox AISI-316.
Made in stainless steel AISI-316.



GOLDENSHIP

| Ref. | Rosca/Thread | Envase/Pack |
|---------|--------------|---------------|
| GS30001 | 3/8" | 1 x bolsa/bag |
| GS30002 | 1/2" | 1 x bolsa/bag |
| GS30003 | 3/4" | 1 x bolsa/bag |
| GS30004 | 1" | 1 x bolsa/bag |
| GS30005 | 1 1/4" | 1 x bolsa/bag |
| GS30006 | 1 1/2" | 1 x bolsa/bag |
| GS30007 | 2" | 1 x bolsa/bag |
| GS30008 | 2 1/2" | 1 x bolsa/bag |
| GS30009 | 3" | 1 x bolsa/bag |

VALVULA DE BOLA BALL VALVE

Construidos en acero inox AISI-316.
Made in stainless steel AISI-316.



GOLDENSHIP

| Ref. | Rosca/Thread | Envase/Pack |
|---------|--------------|---------------|
| GS30060 | 3/4" | 1 x bolsa/bag |
| GS30061 | 1" | 1 x bolsa/bag |
| GS30062 | 1 1/4" | 1 x bolsa/bag |
| GS30063 | 1 1/2" | 1 x bolsa/bag |
| GS30064 | 2" | 1 x bolsa/bag |
| GS30065 | 2 1/2" | 1 x bolsa/bag |
| GS30066 | 3" | 1 x bolsa/bag |
| GS30067 | 4" | 1 x bolsa/bag |

VALVULA DE BOLA 3 vias BALL VALVE 3 ways

Válvula de tres vias tipo «L»
Construidos en acero inox AISI-316.
*3 way valves Type «L».
Made in stainless steel AISI-316.*



GOLDENSHIP

| Ref. | Rosca/Thread | Envase/Pack |
|---------|--------------|---------------|
| GS30030 | 1/2" | 1 x bolsa/bag |
| GS30031 | 3/4" | 1 x bolsa/bag |
| GS30032 | 1" | 1 x bolsa/bag |
| GS30033 | 1 1/4" | 1 x bolsa/bag |
| GS30034 | 1 1/2" | 1 x bolsa/bag |
| GS30035 | 2" | 1 x bolsa/bag |

ENTRONQUES-CODOS / Fittings

ENTRONQUE HOSE ADAPTER

Construidos en acero inox AISI-316.
Made in stainless steel AISI-316.

GOLDENSHIP



| Ref. | Rosca/Thread | Mang./Hose | Envase/Pack |
|---------|--------------|------------|---------------|
| GS30222 | 3/8" | 15 mm. | 1 x bolsa/bag |
| GS30223 | 1/2" | 15 mm. | 1 x bolsa/bag |
| GS30224 | 1/2" | 20 mm. | 1 x bolsa/bag |
| GS30225 | 3/4" | 20 mm. | 1 x bolsa/bag |
| GS30226 | 3/4" | 25 mm. | 1 x bolsa/bag |
| GS30227 | 1" | 25 mm. | 1 x bolsa/bag |
| GS30228 | 1" | 30 mm. | 1 x bolsa/bag |
| GS30229 | 1 1/4" | 35 mm. | 1 x bolsa/bag |
| GS30230 | 1 1/4" | 40 mm. | 1 x bolsa/bag |
| GS30231 | 1 1/2" | 40 mm. | 1 x bolsa/bag |
| GS30232 | 1 1/2" | 45 mm. | 1 x bolsa/bag |
| GS30233 | 2" | 50 mm. | 1 x bolsa/bag |
| GS30234 | 2" | 60 mm. | 1 x bolsa/bag |
| GS30235 | 2 1/2" | 70 mm. | 1 x bolsa/bag |
| GS30236 | 3" | 78 mm. | 1 x bolsa/bag |

RACOR REDUCTOR REDUCING BUSHING

Construidos en acero inox AISI-316.
Made in stainless steel AISI-316.

GOLDENSHIP



| Ref. | Macho/Male | Hembra/Female | Envase/Pack |
|---------|------------|---------------|---------------|
| GS30520 | 3/8" | 1/4" | 1 x bolsa/bag |
| GS30521 | 1/2" | 3/8" | 1 x bolsa/bag |
| GS30522 | 3/4" | 1/2" | 1 x bolsa/bag |
| GS30523 | 1" | 1-3/4" | 1 x bolsa/bag |
| GS30524 | 1-1/4" | 1" | 1 x bolsa/bag |

RACOR REDUCTOR REDUCING BUSHING

Construidos en acero inox AISI-316.
Made in stainless steel AISI-316.

GOLDENSHIP



| Ref. | Macho/Male | Hembra/Female | Envase/Pack |
|---------|------------|---------------|---------------|
| GS30525 | 1-1/2" | 1-1/4" | 1 x bolsa/bag |
| GS30526 | 2" | 1-1/2" | 1 x bolsa/bag |
| GS30527 | 2-1/2" | 2" | 1 x bolsa/bag |
| GS30528 | 3" | 2-1/2" | 1 x bolsa/bag |

TAPON HEMBRA FEMALE PLUG

Construidos en acero inox AISI-316.
Made in stainless steel AISI-316.

GOLDENSHIP



| Ref. | Rosca/Thread | Envase/Pack |
|---------|--------------|---------------|
| GS30590 | 3/8" | 1 x bolsa/bag |
| GS30591 | 1/2" | 1 x bolsa/bag |
| GS30592 | 3/4" | 1 x bolsa/bag |
| GS30593 | 1" | 1 x bolsa/bag |
| GS30594 | 1 1/4" | 1 x bolsa/bag |
| GS30595 | 1 1/2" | 1 x bolsa/bag |
| GS30596 | 2" | 1 x bolsa/bag |

ENTRONQUE HEMBRA FEMALE HOSE ADAPTER

Construidos en acero inox AISI-316.
Made in stainless steel AISI-316.

GOLDENSHIP



| Ref. | Rosca/Thread | Mang./Hose | Envase/Pack |
|---------|--------------|------------|---------------|
| GS30508 | 3/8" | 15 mm. | 1 x bolsa/bag |
| GS30509 | 1/2" | 15 mm. | 1 x bolsa/bag |
| GS30510 | 1/2" | 20 mm. | 1 x bolsa/bag |
| GS30511 | 3/4" | 20 mm. | 1 x bolsa/bag |
| GS30512 | 3/4" | 25 mm. | 1 x bolsa/bag |
| GS30513 | 1" | 25 mm. | 1 x bolsa/bag |
| GS30514 | 1" | 30 mm. | 1 x bolsa/bag |
| GS30515 | 1 1/4" | 35 mm. | 1 x bolsa/bag |
| GS30516 | 1 1/4" | 40 mm. | 1 x bolsa/bag |
| GS30517 | 1 1/2" | 45 mm. | 1 x bolsa/bag |
| GS30518 | 2" | 50 mm. | 1 x bolsa/bag |

MACHONES CONNECTION NIPPLE

Construidos en acero inox AISI-316.
Made in stainless steel AISI-316.



| Ref. | Rosca/Thread | Envase/Pack |
|---------|--------------|---------------|
| GS30237 | 3/8" | 1 x bolsa/bag |
| GS30238 | 1/2" | 1 x bolsa/bag |
| GS30239 | 3/4" | 1 x bolsa/bag |
| GS30240 | 1" | 1 x bolsa/bag |
| GS30241 | 1 1/4" | 1 x bolsa/bag |
| GS30242 | 1 1/2" | 1 x bolsa/bag |
| GS30243 | 2" | 1 x bolsa/bag |

CONECTOR DOBLE DOUBLE CONNECTION

Construidos en acero inox AISI-316.
Made in stainless steel AISI-316.



| Ref. | Rosca/Thread | Envase/Pack |
|---------|--------------|---------------|
| GS30570 | 3/8" | 1 x bolsa/bag |
| GS30571 | 1/2" | 1 x bolsa/bag |
| GS30572 | 3/4" | 1 x bolsa/bag |
| GS30573 | 1" | 1 x bolsa/bag |
| GS30574 | 1 1/4" | 1 x bolsa/bag |
| GS30575 | 1 1/2" | 1 x bolsa/bag |
| GS30576 | 2" | 1 x bolsa/bag |

TAPON MACHO MALE PLUG

Construidos en acero inox AISI-316.
Made in stainless steel AISI-316.

GOLDENSHIP



| Ref. | Rosca/Thread | Envase/Pack |
|---------|--------------|---------------|
| GS30580 | 3/8" | 1 x bolsa/bag |
| GS30581 | 1/2" | 1 x bolsa/bag |
| GS30582 | 3/4" | 1 x bolsa/bag |
| GS30583 | 1" | 1 x bolsa/bag |
| GS30584 | 1 1/4" | 1 x bolsa/bag |
| GS30585 | 1 1/2" | 1 x bolsa/bag |
| GS30586 | 2" | 1 x bolsa/bag |

ENTRONQUES-CODOS / Fittings

CODO 90° Hembra/Hembra 90° PIPE ELBOW Female/Female

Construidos en acero inox AISI-316.
Made in stainless steel AISI-316.



GOLDENSHIP

| Ref. | Rosca/Thread | Envase/Pack |
|---------|--------------|---------------|
| GS30540 | 3/8" | 1 x bolsa/bag |
| GS30541 | 1/2" | 1 x bolsa/bag |
| GS30542 | 3/4" | 1 x bolsa/bag |
| GS30543 | 1" | 1 x bolsa/bag |
| GS30544 | 1 1/4" | 1 x bolsa/bag |
| GS30545 | 1 1/2" | 1 x bolsa/bag |
| GS30546 | 2" | 1 x bolsa/bag |

CODO 90° Macho/Hembra 90° PIPE ELBOW Male/Female

Construidos en acero inox AISI-316.
Made in stainless steel AISI-316.



GOLDENSHIP

| Ref. | Rosca/Thread | Envase/Pack |
|---------|--------------|---------------|
| GS30550 | 3/8" | 1 x bolsa/bag |
| GS30551 | 1/2" | 1 x bolsa/bag |
| GS30552 | 3/4" | 1 x bolsa/bag |
| GS30553 | 1" | 1 x bolsa/bag |
| GS30554 | 1 1/4" | 1 x bolsa/bag |
| GS30555 | 1 1/2" | 1 x bolsa/bag |
| GS30556 | 2" | 1 x bolsa/bag |

CODO 45° Hembra/Hembra 45° PIPE ELBOW Female/Female

Construidos en acero inox AISI-316.
Made in stainless steel AISI-316.



GOLDENSHIP

| Ref. | Rosca/Thread | Envase/Pack |
|---------|--------------|---------------|
| GS30560 | 3/8" | 1 x bolsa/bag |
| GS30561 | 1/2" | 1 x bolsa/bag |
| GS30562 | 3/4" | 1 x bolsa/bag |
| GS30563 | 1" | 1 x bolsa/bag |
| GS30564 | 1 1/4" | 1 x bolsa/bag |
| GS30565 | 1 1/2" | 1 x bolsa/bag |
| GS30566 | 2" | 1 x bolsa/bag |

CONEXION «T» Hembra PIPE TEE Female

Construidos en acero inox AISI-316.
Made in stainless steel AISI-316.



GOLDENSHIP

| Ref. | Rosca/Thread | Envase/Pack |
|---------|--------------|---------------|
| GS30530 | 3/8" | 1 x bolsa/bag |
| GS30531 | 1/2" | 1 x bolsa/bag |
| GS30532 | 3/4" | 1 x bolsa/bag |
| GS30533 | 1" | 1 x bolsa/bag |
| GS30534 | 1 1/4" | 1 x bolsa/bag |
| GS30535 | 1 1/2" | 1 x bolsa/bag |
| GS30536 | 2" | 1 x bolsa/bag |

CODO 90° Hembra/Hembra 90° PIPE ELBOW Female/Female

Construidos en latón.
Manufactured in brass.



GOLDENSHIP

| Ref. | Rosca/Thread | Envase/Pack |
|---------|--------------|---------------|
| GS30160 | 3/8" | 1 x bolsa/bag |
| GS30161 | 1/2" | 1 x bolsa/bag |
| GS30162 | 3/4" | 1 x bolsa/bag |
| GS30163 | 1" | 1 x bolsa/bag |
| GS30164 | 1 1/4" | 1 x bolsa/bag |
| GS30165 | 1 1/2" | 1 x bolsa/bag |
| GS30166 | 2" | 1 x bolsa/bag |
| GS30167 | 2-1/2" | 1 x bolsa/bag |
| GS30168 | 3" | 1 x bolsa/bag |

CODO 90° Macho/Hembra 90° PIPE ELBOW Male/Female

Construidos en latón.
Manufactured in brass.



GOLDENSHIP

| Ref. | Rosca/Thread | Envase/Pack |
|---------|--------------|---------------|
| GS30170 | 3/8" | 1 x bolsa/bag |
| GS30171 | 1/2" | 1 x bolsa/bag |
| GS30172 | 3/4" | 1 x bolsa/bag |
| GS30173 | 1" | 1 x bolsa/bag |
| GS30174 | 1 1/4" | 1 x bolsa/bag |
| GS30175 | 1 1/2" | 1 x bolsa/bag |
| GS30176 | 2" | 1 x bolsa/bag |
| GS30177 | 2-1/2" | 1 x bolsa/bag |
| GS30178 | 3" | 1 x bolsa/bag |

CONEXION «T» Hembra PIPE TEE Female

Construidos en latón.
Manufactured in brass.



GOLDENSHIP

| Ref. | Rosca/Thread | Envase/Pack |
|---------|--------------|---------------|
| GS30180 | 3/8" | 1 x bolsa/bag |
| GS30181 | 1/2" | 1 x bolsa/bag |
| GS30182 | 3/4" | 1 x bolsa/bag |
| GS30183 | 1" | 1 x bolsa/bag |
| GS30184 | 1 1/4" | 1 x bolsa/bag |
| GS30185 | 1 1/2" | 1 x bolsa/bag |
| GS30186 | 2" | 1 x bolsa/bag |
| GS30187 | 2-1/2" | 1 x bolsa/bag |
| GS30188 | 3" | 1 x bolsa/bag |

RACOR REDUCTOR REDUCING BUSHING

Construidos en latón.
Manufactured in brass.



GOLDENSHIP

| Ref. | Macho/Male | Hembra/Female | Envase/Pack |
|---------|------------|---------------|---------------|
| GS30190 | 1/2" | 3/8" | 1 x bolsa/bag |
| GS30191 | 3/4" | 1/2" | 1 x bolsa/bag |
| GS30192 | 1" | 3/4" | 1 x bolsa/bag |

ENTRONQUES-CODOS / Fittings

MACHONES CONNECTION NIPPLE

Construidos en latón.
Male. Manufactured in brass.

GOLDENSHIP



| Ref. | Rosca/Thread | Envase/Pack |
|---------|--------------|---------------|
| GS30150 | 3/8" | 1 x bolsa/bag |
| GS30151 | 1/2" | 1 x bolsa/bag |
| GS30152 | 3/4" | 1 x bolsa/bag |
| GS30153 | 1" | 1 x bolsa/bag |
| GS30154 | 1 1/4" | 1 x bolsa/bag |
| GS30155 | 1 1/2" | 1 x bolsa/bag |
| GS30156 | 2" | 1 x bolsa/bag |
| GS30157 | 2-1/2" | 1 x bolsa/bag |
| GS30158 | 3" | 1 x bolsa/bag |

TAPON MACHO MALE NUT PLUG

Construidos en latón.
Manufactured in brass.

GOLDENSHIP



| Ref. | Rosca/Thread | Envase/Pack |
|---------|--------------|---------------|
| GS30280 | 3/8" | 1 x bolsa/bag |
| GS30281 | 1/2" | 1 x bolsa/bag |
| GS30282 | 3/4" | 1 x bolsa/bag |
| GS30283 | 1" | 1 x bolsa/bag |
| GS30284 | 1 1/4" | 1 x bolsa/bag |
| GS30285 | 1 1/2" | 1 x bolsa/bag |
| GS30286 | 2" | 1 x bolsa/bag |

TAPON HEMBRA FEMALE NUT PLUG

Construidos en latón.
Manufactured in brass.

GOLDENSHIP



| Ref. | Rosca/Thread | Envase/Pack |
|---------|--------------|---------------|
| GS30290 | 3/8" | 1 x bolsa/bag |
| GS30291 | 1/2" | 1 x bolsa/bag |
| GS30292 | 3/4" | 1 x bolsa/bag |
| GS30293 | 1" | 1 x bolsa/bag |
| GS30294 | 1 1/4" | 1 x bolsa/bag |
| GS30295 | 1 1/2" | 1 x bolsa/bag |
| GS30296 | 2" | 1 x bolsa/bag |

RACOR REDUCTOR REDUCING BUSHING

Construidos en latón.
Manufactured in brass.

GOLDENSHIP



| Ref. | Macho/Male | Hembra/Female | Envase/Pack |
|---------|------------|---------------|---------------|
| GS30195 | 3/8" | 1/2" | 1 x bolsa/bag |
| GS30196 | 1/2" | 3/4" | 1 x bolsa/bag |
| GS30197 | 3/4" | 1" | 1 x bolsa/bag |
| GS30198 | 1" | 1-1/2" | 1 x bolsa/bag |
| GS30199 | 1-1/4" | 1-1/2" | 1 x bolsa/bag |

ENTRONQUE MACHO MALE HOSE ADAPTER

Construidos en latón.
Male. Manufactured in brass.

GOLDENSHIP



| Ref. | Rosca/Thread | Mang./Hose | Envase/Pack |
|---------|--------------|------------|---------------|
| GS30108 | 1/4" | 8 mm. | 1 x bolsa/bag |
| GS30109 | 1/4" | 10 mm. | 1 x bolsa/bag |
| GS30110 | 3/8" | 10 mm. | 1 x bolsa/bag |
| GS30100 | 3/8" | 13 mm. | 1 x bolsa/bag |
| GS30101 | 1/2" | 17 mm. | 1 x bolsa/bag |
| GS30102 | 3/4" | 22 mm. | 1 x bolsa/bag |
| GS30103 | 1" | 29 mm. | 1 x bolsa/bag |
| GS30118 | 1" | 32 mm. | 1 x bolsa/bag |
| GS30119 | 1 1/4" | 32 mm. | 1 x bolsa/bag |
| GS30104 | 1 1/4" | 34 mm. | 1 x bolsa/bag |
| GS30105 | 1 1/2" | 45 mm. | 1 x bolsa/bag |
| GS30106 | 2" | 59 mm. | 1 x bolsa/bag |
| GS30107 | 3" | 75 mm. | 1 x bolsa/bag |

ENTRONQUE HEMBRA FEMALE HOSE ADAPTER

Construidos en latón.
Female. Manufactured in brass.

GOLDENSHIP



| Ref. | Rosca/Thread | Mang./Hose | Envase/Pack |
|---------|--------------|------------|---------------|
| GS30270 | 3/8" | 13 mm. | 1 x bolsa/bag |
| GS30271 | 1/2" | 16 mm. | 1 x bolsa/bag |
| GS30272 | 3/4" | 20 mm. | 1 x bolsa/bag |
| GS30273 | 1" | 30 mm. | 1 x bolsa/bag |
| GS30274 | 1 1/4" | 35 mm. | 1 x bolsa/bag |
| GS30275 | 1 1/2" | 40 mm. | 1 x bolsa/bag |
| GS30276 | 2" | 50 mm. | 1 x bolsa/bag |

ENTRONQUES INODORO HOSE ADAPTER

Construidos en latón.
Male. Manufactured in brass.
For marine toilets.

GOLDENSHIP



| Ref. | Rosca/Thread | Mang./Hose | Envase/Pack |
|---------|--------------|------------|---------------|
| GS30120 | 3/4" | 20 mm. | 1 x bolsa/bag |
| GS30121 | 1 1/4" | 40 mm. | 1 x bolsa/bag |
| GS30122 | 1 1/2" | 40 mm. | 1 x bolsa/bag |
| GS30123 | 1 1/2" | 38 mm. | 1 x bolsa/bag |

RACOR REDUCTOR REDUCER FITTING

Fabricados en plástico reforzado.
Made in glass filled polymer.



| Ref. | Macho Male | Hembra Female | Envase/Pack |
|---------------|------------|---------------|--------------|
| THMS-3RB10034 | 1" | 3/4" | 2 x skinpack |
| THMS-3RB11434 | 1-1/4" | 3/4" | 2 x skinpack |
| THMS-3RB11234 | 1-1/2" | 3/4" | 2 x skinpack |

ENTRONQUES / Fittings

ENTRONQUES HOSE ADAPTER

Fabricados en poliamida.
Made in polyamide.

GOLDENSHIP



| Ref. | Rosca/Thread | Mang./Hose | Envase/Pack |
|---------|--------------|------------|---------------|
| GS30130 | 3/8" | 12 mm. | 1 x bolsa/bag |
| GS30131 | 1/2" | 12 mm. | 1 x bolsa/bag |
| GS30132 | 1/2" | 16 mm. | 1 x bolsa/bag |
| GS30133 | 3/4" | 19 mm. | 1 x bolsa/bag |
| GS30134 | 1" | 25 mm. | 1 x bolsa/bag |

RACOR 90° 90° ELBOW

Fabricados en poliamida.
Made in polyamide.



GOLDENSHIP

| Ref. | Rosca/Thread | Mang./Hose | Envase/Pack |
|---------|--------------|------------|---------------|
| GS30124 | 3/8" | 12 mm. | 1 x bolsa/bag |
| GS30125 | 1/2" | 12 mm. | 1 x bolsa/bag |
| GS30126 | 3/4" | 19 mm. | 1 x bolsa/bag |
| GS30127 | 1" | 25 mm. | 1 x bolsa/bag |

EMPALME RECTO CONNECTOR

Fabricados en poliamida.
Made in polyamide.

GOLDENSHIP



| Ref. | Mang./Hose | Envase/Pack |
|---------|------------|---------------|
| GS30137 | 10 mm. | 1 x bolsa/bag |
| GS30138 | 12 mm. | 1 x bolsa/bag |
| GS30139 | 16 mm. | 1 x bolsa/bag |
| GS30140 | 19 mm. | 1 x bolsa/bag |

EMPALME «Y» «Y» CONNECTOR

Fabricados en poliamida.
Made in polyamide.

GOLDENSHIP



| Ref. | Mang./Hose | Envase/Pack |
|---------|------------|---------------|
| GS30143 | 10 mm. | 1 x bolsa/bag |
| GS30144 | 12 mm. | 1 x bolsa/bag |
| GS30145 | 16 mm. | 1 x bolsa/bag |
| GS30146 | 19 mm. | 1 x bolsa/bag |

EMPALME «T» HEMBRA TEE CONNECTOR FEMALE



Fabricados en plástico reforzado.
Made in glass filled polymer.



| Ref. | Rosca / threads | Envase/Pack |
|-------------|-----------------|--------------|
| THMS-3TT34 | 3/4" NPT. | 1 x skinpack |
| THMS-3TT100 | 1" NPT. | 1 x skinpack |
| THMS-3TT114 | 1-1/4" NPT. | 1 x skinpack |
| THMS-3TT112 | 1-1/2" NPT. | 1 x skinpack |

RACOR RESPIRADERO HOSE ADAPTER

Fabricados en poliamida.
Made in polyamide.

GOLDENSHIP



| Ref. | Rosca/Thread | Mang./Hose | Envase/Pack |
|---------|--------------|------------|---------------|
| GS30252 | 3/8" | 16-18 mm. | 1 x bolsa/bag |

ENTRONQUES HOSE ADAPTER

Fabricados en polipropileno.
Made in polypropylene.



GOLDENSHIP

| Ref. | Rosca/Thread | Mang./Hose | Envase/Pack |
|---------|--------------|------------|---------------|
| GS30250 | 3/4" | 25 mm. | 1 x bolsa/bag |
| GS30251 | 1-1/2" | 38 mm. | 1 x bolsa/bag |
| GS30253 | 1-1/2" | 50 mm. | 1 x bolsa/bag |

RACOR HEMBRA FEMALE ADAPTER

Fabricados en plástico.
Made in plastic.

GOLDENSHIP



| Ref. | Rosca/Thread | Mang./Hose | Envase/Pack |
|---------|--------------|------------|---------------|
| GS30255 | 1/2" | 16 mm. | 1 x bolsa/bag |

ENTRONQUES HOSE ADAPTER

Fabricados en plástico reforzado.
Made in glass filled polymer.



| Ref. | Rosca / thread | Mang./Hose | Envase/Pack |
|--------------|----------------|------------|--------------|
| THMS-3A1234 | 1/2" NPT. | 19 mm | 1 x skinpack |
| THMS-3A34 | 3/4" NPT. | 19 mm | 1 x skinpack |
| THMS-3A10034 | 1" NPT. | 19 mm | 1 x skinpack |
| THMS-3A11434 | 1-1/4" NPT. | 19 mm | 1 x skinpack |
| THMS-3A112 | 1-1/2" NPT. | 38 mm | 1 x skinpack |

MACHONES CONNECTION NIPPLE

Fabricados en plástico reforzado.
Made in glass filled polymer.



| Ref. | Rosca / thread | Envase/Pack |
|------------|----------------|--------------|
| THMS-3M34 | 3/4" NPT. | 1 x skinpack |
| THMS-3M100 | 1" NPT. | 1 x skinpack |
| THMS-3M114 | 1-1/4" NPT. | 1 x skinpack |
| THMS-3M112 | 1-1/2" NPT. | 1 x skinpack |

DESAGÜES - EMPALMES / Thru-Hull - Fittings

ADAPTADOR MANGUERA HOSE ADAPTER

Adaptadores para ajustar la salida de la bomba a la manguera.
Hose adapters for pump outlets to hose.



| Ref. | Bomba/Pump | Manguera/Hose |
|------|-----------------|------------------------|
| RU67 | Ø 38mm / 1-1/2" | Ø 29mm / 1-1/8" |
| RU69 | Ø 29mm / 1-1/8" | Ø 19-16mm / 3/4 - 5/8" |

EMPALME «T» TEE CONNECTOR

Fabricados en plástico.
Made in plastic.



| Ref. | Mang./Hose | Envase/Pack |
|---------|-------------------|---------------|
| GS30096 | 19 mm. = 3/4" | 1 x bolsa/bag |
| GS30097 | 28,5 mm. = 1-1/8" | 1 x bolsa/bag |

CODO 90° 90° ELBOW

Fabricados en plástico.
Made in plastic.



| Ref. | Mang./Hose | Envase/Pack |
|---------|-------------------|---------------|
| GS30094 | 19 mm. = 3/4" | 1 x bolsa/bag |
| GS30095 | 28,5 mm. = 1-1/8" | 1 x bolsa/bag |

ABRAZADERA DE NYLON SNAPPER CLAMPS

Abrazaderas de mordaza.
Fabricadas en nylon blanco.
Manufactured in nylon white.



| Ref. | Ø / Clamp range | Envase/Pack |
|---------|-------------------|--------------|
| GS38028 | 6,25 a 7,37 mm. | 5 x skinpack |
| GS38029 | 7,62 a 8,89 mm. | 5 x skinpack |
| GS38030 | 9,14 a 10,31 mm. | 5 x skinpack |
| GS38031 | 10,41 a 11,89 mm. | 5 x skinpack |
| GS38032 | 12,07 a 13,61 mm. | 5 x skinpack |
| GS38033 | 13,67 a 15,44 mm. | 5 x skinpack |
| GS38034 | 15,16 a 16,89 mm. | 5 x skinpack |
| GS38035 | 17,02 a 19,81 mm. | 5 x skinpack |
| GS38036 | 18,54 a 21,08 mm. | 5 x skinpack |
| GS38037 | 22,10 a 24,77 mm. | 5 x skinpack |
| GS38038 | 24,21 a 27,76 mm. | 5 x skinpack |

CONDUCTO DESAGÜE DRAIN TUBE

Fabricados en nylon negro.
Longitud: 80 mm.
Manufactured in black plastic.
Total length: 80 mm.



| Ref. | Ø Exterior | Ø Interior | Envase/Pack |
|---------|------------|------------|---------------|
| GS30319 | 30 mm. | 23 mm. | 1 x bolsa/bag |

CONDUCTO DESAGÜE DRAIN TUBE

Fabricados en nylon blanco.
Manufactured in white plastic.



| Ref. | Ø Int. | Long/Length | Envase/Pack |
|---------|--------|-------------|---------------|
| GS30090 | 19 mm. | 50 mm. | 1 x bolsa/bag |
| GS30091 | 23 mm. | 75 mm. | 1 x bolsa/bag |

TAPON DESAGÜE DRAIN PLUG

Tapón de cierre a presión.
Fabricado en acero inox y neopreno.
Para conductos de 23 mm.
Manufactured in stainless steel and neoprene.
For 23 mm thru hulls.



| Ref. | Ø Exterior | Envase/Pack |
|---------|------------|--------------|
| GS30301 | 23 mm. | 1 x skinpack |

TAPON DESAGÜE DRAIN PLUG

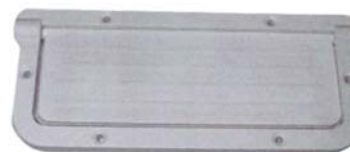
Tapón de cierre a presión.
Fabricado en plástico y goma.
Manufactured in strong plastic and rubber. For thru hulls.



| Ref. | Ø Exterior | Envase/Pack |
|---------|------------|--------------|
| GS30324 | 23 mm. | 1 x skinpack |
| GS30323 | 34 mm. | 1 x skinpack |
| GS30325 | 42 mm. | 1 x skinpack |

VALVULA DESAGÜE RECTANGULAR RECTANGULAR SCUPPER VALVE

Fabricada en plástico blanco.
Ideal para bañeras autovaciantes sobre la línea de flotación.
Manufactured in white plastic.
For boats with self bailing decks above waterline.



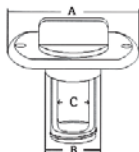
| Ref. | Dim.Int. / Inside dim. | Envase/Pack |
|---------|--------------------------|--------------|
| THLRS-2 | 51x 140 mm / 2" x 5-1/2" | 1 x skinpack |

DESAGÜES BAÑERA / Drain Plugs

DESAGÜE CON TAPON DRAIN PLUG WITH SOCKET

Tapón roscado.
Fabricado en latón pulido.
Brass drain plug.

GOLDENSHIP



Dimensiones en milímetros
Dimensions in mm.

| Ref. | A | B | C | Envase/Pack |
|---------|----|----|----|--------------|
| GS30326 | 54 | 24 | 12 | 1 x skinpack |
| GS30327 | 64 | 31 | 19 | 1 x skinpack |

DESAGÜE CON TAPON DRAIN PLUG WITH SOCKET

Tapón roscado.
Fabricado en material plástico.
Nylon base with a captured drain plug.

GOLDENSHIP



| Ref. | Descripción/Description | Envase/Pack |
|---------|-------------------------|--------------|
| GS30314 | Nylon Negro / Black | 1 x skinpack |
| GS30315 | Nylon Blanco / White | 1 x skinpack |

DESAGÜE CON TAPON DRAIN PLUG WITH SOCKET

Tapón roscado.
Fabricado en material plástico.
Nylon base with a captured drain plug.

GOLDENSHIP



| Ref. | Descripción/Description | Envase/Pack |
|---------|-------------------------|--------------|
| GS30336 | Nylon Negro / Black | 1 x skinpack |
| GS30337 | Nylon Blanco / White | 1 x skinpack |

DESAGÜE CON TAPON DRAIN PLUG WITH SOCKET

Tapón roscado.
Fabricado en material plástico.
Color negro.
Black nylon screw type with a captured drain plug.

GOLDENSHIP



| Ref. | Envase/Pack |
|---------|--------------|
| GS30092 | 1 x skinpack |

VALVULA DESAGÜE SCUPPER VALVE

Fabricada en plástico y neopreno.
Ideal para bañeras autovaciantes.
Manufactured in white plastic with rubber flap and gasket. For boats with self bailing cockpits.

GOLDENSHIP

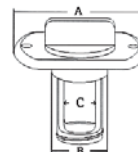


| Ref. | Ø Exterior | Ø Interior | Envase/Pack |
|---------|------------|------------|--------------|
| GS30093 | 70 mm. | 33 mm. | 1 x skinpack |

DESAGÜE CON TAPON DRAIN PLUG WITH SOCKET

Tapón roscado.
Fabricado en acero inox
AISI 316.
Stainless steel AISI-316
cast flange and plug.

GOLDENSHIP



Dimensiones en milímetros
Dimensions in mm.

| Ref. | A | B | C | Envase/Pack |
|---------|----|----|----|--------------|
| GS30328 | 54 | 24 | 12 | 1 x skinpack |
| GS30329 | 64 | 31 | 19 | 1 x skinpack |

DESAGÜE CON TAPON DRAIN PLUG WITH SOCKET

Tapón roscado.
Fabricado en latón.
Brass cast flange and plug.
Diámetro total/Outside dia: 54 mm.

GOLDENSHIP



| Ref. | Descripción/Description | Envase/Pack |
|---------|-------------------------------|--------------|
| GS30310 | Desagüe completo/Drain & plug | 1 x skinpack |
| GS30311 | Tapón de recambio/Spare plug | 1 x skinpack |

DESAGÜE CON TAPON DRAIN PLUG WITH SOCKET

Tapón roscado.
Fabricado en acero inox AISI-316.
Stainless steel AISI-316 cast
flange and plug.
Diámetro total/Outside dia: 54 mm

GOLDENSHIP



| Ref. | Descripción/Description | Envase/Pack |
|---------|-------------------------------|--------------|
| GS30312 | Desagüe completo/Drain & plug | 1 x skinpack |
| GS30313 | Tapón de recambio/Spare plug | 1 x skinpack |

VALVULA DESAGÜE SCUPPER VALVE

Fabricada en plástico y válvula termoplástica. Fácil instalación sobre tubos de desagüe.
Manufactured in white plastic with tough thermoplastic flapper. Easy to install over drain tubes.



Marine

| Ref. | Ø Exterior | Ø Interior | Envase/Pack |
|----------|------------|------------|--------------|
| THDBS-2B | 70 mm. | 33 mm. | 1 x skinpack |

VALVULA DESAGÜE SCUPPER VALVE

Fabricada en plástico transparente y bola de bloqueo interna. Fácil instalación sobre tubos de desagüe.
Manufactured in clear plastic with Flow-Max ball. Easy to install over drain tubes.



Marine

| Ref. | Ø Exterior | Ø Interior | Envase/Pack |
|-----------|------------|------------|--------------|
| THFMS-1-0 | 76 mm. | 33 mm. | 1 x skinpack |

PASACASCOS / Thru-Hull

PASACASCOS THRU HULL SCUPPER

Construidos en latón.
Manufactured in brass.

GOLDENSHIP



| Ref. | Rosca/Thread | Envase/Pack |
|---------|--------------|---------------|
| GS30051 | 1/2" | 1 x bolsa/bag |
| GS30052 | 3/4" | 1 x bolsa/bag |
| GS30053 | 1" | 1 x bolsa/bag |
| GS30054 | 1 1/4" | 1 x bolsa/bag |
| GS30055 | 1 1/2" | 1 x bolsa/bag |
| GS30056 | 2" | 1 x bolsa/bag |
| GS30057 | 2 1/2" | 1 x bolsa/bag |
| GS30058 | 3" | 1 x bolsa/bag |

PASACASCOS THRU HULL SCUPPER

Construidos en latón.
Manufactured in brass.

GOLDENSHIP

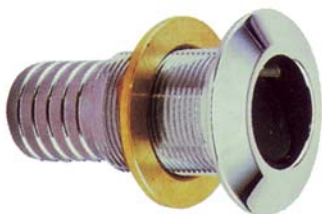


| Ref. | Rosca/Thread | Envase/Pack |
|---------|--------------|---------------|
| GS30360 | 3/8" | 1 x bolsa/bag |
| GS30361 | 1/2" | 1 x bolsa/bag |
| GS30362 | 3/4" | 1 x bolsa/bag |
| GS30363 | 1" | 1 x bolsa/bag |
| GS30364 | 1 1/4" | 1 x bolsa/bag |
| GS30365 | 1 1/2" | 1 x bolsa/bag |
| GS30366 | 2" | 1 x bolsa/bag |

PASACASCOS THRU HULL SCUPPER

Construidos en latón cromado.
Manufactured in chromed brass.

GOLDENSHIP



| Ref. | Rosca/Thread | Mang./Hose | Envase/Pack |
|---------|--------------|------------|---------------|
| GS30070 | 3/8" | 13 mm. | 1 x bolsa/bag |
| GS30071 | 1/2" | 16 mm. | 1 x bolsa/bag |
| GS30072 | 3/4" | 22 mm. | 1 x bolsa/bag |
| GS30073 | 1" | 30 mm. | 1 x bolsa/bag |
| GS30074 | 1 1/4" | 38 mm. | 1 x bolsa/bag |
| GS30075 | 1 1/2" | 43 mm. | 1 x bolsa/bag |
| GS30076 | 2" | 60 mm. | 1 x bolsa/bag |

REJILLA TOMA DE AGUA SCOOP STRAINER

Construidos en latón.
Manufactured in brass.

GOLDENSHIP



| Ref. | Ø Exterior / Ext Ø | Envase/Pack |
|---------|--------------------|---------------|
| GS30376 | 60 mm | 1 x bolsa/bag |
| GS30377 | 80 mm | 1 x bolsa/bag |
| GS30378 | 100 mm | 1 x bolsa/bag |
| GS30379 | 120 mm | 1 x bolsa/bag |

PASACASCOS THRU HULL SCUPPER

Fabricado en acero inox AISI-316.
Stainless steel 316.

GOLDENSHIP



| Ref. | Rosca/Thread | Envase/Pack |
|---------|--------------|---------------|
| GS30208 | 3/8" | 1 x bolsa/bag |
| GS30209 | 1/2" | 1 x bolsa/bag |
| GS30210 | 3/4" | 1 x bolsa/bag |
| GS30211 | 1" | 1 x bolsa/bag |
| GS30212 | 1 1/4" | 1 x bolsa/bag |
| GS30213 | 1 1/2" | 1 x bolsa/bag |
| GS30214 | 2" | 1 x bolsa/bag |

PASACASCOS THRU HULL SCUPPER

Fabricado en acero inox AISI-316.
Stainless steel 316.

GOLDENSHIP



| Ref. | Rosca/Thread | Envase/Pack |
|---------|--------------|---------------|
| GS30370 | 3/8" | 1 x bolsa/bag |
| GS30371 | 1/2" | 1 x bolsa/bag |
| GS30372 | 3/4" | 1 x bolsa/bag |
| GS30373 | 1" | 1 x bolsa/bag |
| GS30374 | 1 1/4" | 1 x bolsa/bag |
| GS30375 | 1 1/2" | 1 x bolsa/bag |

PASACASCOS THRU HULL SCUPPER

Fabricado en acero inox AISI-316.
Stainless steel 316.

GOLDENSHIP



| Ref. | Rosca/Thread | Mang./Hose | Envase/Pack |
|---------|--------------|------------|---------------|
| GS30215 | 3/8" | 15 mm. | 1 x bolsa/bag |
| GS30216 | 1/2" | 19 mm. | 1 x bolsa/bag |
| GS30217 | 3/4" | 25 mm. | 1 x bolsa/bag |
| GS30218 | 1" | 30 mm. | 1 x bolsa/bag |
| GS30219 | 1 1/4" | 39 mm. | 1 x bolsa/bag |
| GS30220 | 1 1/2" | 45 mm. | 1 x bolsa/bag |

REJILLA TOMA DE AGUA SCOOP STRAINER

Construidos en latón.
Manufactured in brass.

GOLDENSHIP



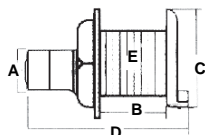
| Ref. | Dimensiones / Dimensions | Envase/Pack |
|---------|--------------------------|---------------|
| GS30369 | 270 x 200 mm | 1 x bolsa/bag |

PASACASCOS / Thru-Hull

DESAGÜE BAÑERA STALON COCKPIT DRAIN

Construido en nylon reforzado con fibra de vidrio (66-30%) y embellecedor exterior estampado de acero inox AISI 316.

Manufactured in nylon (66-30%) glass filled body and S.S. 316 stamped face.



GOLDENSHIP

Dimensiones en milímetros
Dimensions in mm.

| Ref. | A | B | C | D | E | Envase/Pack |
|---------|----|----|----|-----|----|---------------|
| GS30338 | 38 | 45 | 60 | 128 | 55 | 1 x bolsa/bag |
| GS30339 | 51 | 45 | 60 | 128 | 55 | 1 x bolsa/bag |

PASACASCOS CON VALVULA THRU HULL SCUPPER

Fabricado en acero inox AISI 316.

Válvula anti-retorno incorporada.

Manufactured in stainless steel AISI 316 with a PVC flapper valve.



GOLDENSHIP

| Ref. | Mang./Hose | Envase/Pack |
|---------|----------------|---------------|
| GS30332 | 38 mm = 1-1/2" | 1 x bolsa/bag |

PASACASCOS CON VALVULA THRU HULL SCUPPER

Fabricado en plástico reforzado.

Válvula anti-retorno incorporada.

Para manguera de 38 mm.

Espesor máximo: 89 mm.

Plastic with rubber flapper valve.

Fits 1-1/2" hose.

Hulls up to: 3-1/2".



| Ref. | Color | Envase/Pack |
|----------|----------------|--------------|
| THRFTH-1 | Negro / Black | 1 x skinpack |
| THRFTH-2 | Blanco / White | 1 x skinpack |

PASACASCOS CON VALVULA THRU HULL SCUPPER

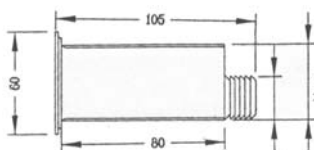
Fabricado en plástico color blanco.

Válvula anti-retorno incorporada.

Diámetro interior: 42 mm.

White plastic with rubber flapper valve.

Inside diameter: 42 mm.



GOLDENSHIP

| Ref. | Long. total | Mang./Hose | Envase/Pack |
|---------|-------------|------------|---------------|
| GS30320 | 105 mm. | 30 mm. | 1 x bolsa/bag |

PASACASCOS CON VALVULA THRU HULL SCUPPER

Construidos en nylon reforzado con fibra de vidrio (66-30%) y embellecedor exterior estampado de acero inox AISI 316.

Válvula de PVC.

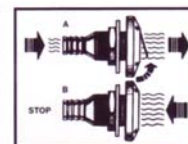
Manufactured in reinforced nylon with a S.S. 316 stamped face. with a PVC flapper valve.



GOLDENSHIP

| Ref. | Mang./Hose | Envase/Pack |
|---------|----------------|---------------|
| GS30331 | 38 mm = 1-1/2" | 1 x bolsa/bag |

PASACASCOS CON VALVULA THRU HULL SCUPPER



Fabricado en nylon color blanco.

Válvula anti-retorno incorporada.

White nylon with rubber flapper valve.

GOLDENSHIP

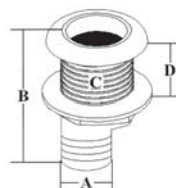
| Ref. | Mang./Hose | Envase/Pack |
|---------|----------------|---------------|
| GS30330 | 38 mm = 1-1/2" | 1 x bolsa/bag |

PASACASCOS CON VALVULA THRU HULL SCUPPER

Fabricado en acero inox AISI 316.

Válvula anti-retorno incorporada.

Manufactured in stainless steel AISI 316 with a center mounted check valve.



GOLDENSHIP

| Ref. | Dimensiones en mm. | Envase/Pack |
|---------|-------------------------------|---------------|
| GS30333 | Ø 1-1/2" A 38 B 106 C 55 D 35 | 1 x bolsa/bag |

PASACASCOS CON VALVULA THRU HULL SCUPPER

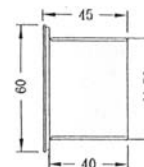
Fabricado en plástico color blanco.

Válvula anti-retorno incorporada.

Diámetro interior: 42 mm.

White plastic with rubber flapper valve.

Inside diameter: 42 mm.



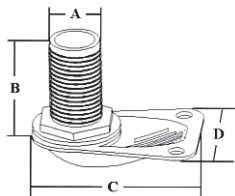
GOLDENSHIP

| Ref. | Envase/Pack |
|---------|---------------|
| GS30321 | 1 x bolsa/bag |

PASACASCOS / Thru-Hull

TOMA DE AGUA C/PASACASCOS STRAINER INTAKE THRU HULL

Fabricado en acero inox AISI-316.
Stainless steel 316.



Dimensiones en milímetros

| Ref. | A | B | C | D | Envase/Pack |
|---------|--------|----|-----|----|---------------|
| GS30245 | 1" | 62 | 98 | 73 | 1 x bolsa/bag |
| GS30246 | 1-1/4" | 85 | 120 | 89 | 1 x bolsa/bag |
| GS30247 | 1-1/2" | 85 | 120 | 89 | 1 x bolsa/bag |

TOMA DE AGUA C/PASACASCOS STRAINER INTAKE THRU HULL

Construidos en latón.
Manufactured in brass.

GOLDENSHIP



| Ref. | Rosca/Thread | Envase/Pack |
|---------|--------------|---------------|
| GS30021 | 1/2" | 1 x bolsa/bag |
| GS30022 | 3/4" | 1 x bolsa/bag |
| GS30023 | 1" | 1 x bolsa/bag |
| GS30024 | 1 1/4" | 1 x bolsa/bag |
| GS30025 | 1 1/2" | 1 x bolsa/bag |
| GS30026 | 2" | 1 x bolsa/bag |
| GS30027 | 2 1/2" | 1 x bolsa/bag |
| GS30028 | 3" | 1 x bolsa/bag |

TOMA DE AGUA C/PASACASCOS STRAINER INTAKE THRU HULL

Fabricado en acero inox AISI-316.
Stainless steel 316.

GOLDENSHIP



| Ref. | Rosca/Thread | Envase/Pack |
|---------|--------------|---------------|
| GS30200 | 3/8" | 1 x bolsa/bag |
| GS30201 | 1/2" | 1 x bolsa/bag |
| GS30202 | 3/4" | 1 x bolsa/bag |
| GS30203 | 1" | 1 x bolsa/bag |
| GS30204 | 1 1/4" | 1 x bolsa/bag |
| GS30205 | 1 1/2" | 1 x bolsa/bag |
| GS30206 | 2" | 1 x bolsa/bag |
| GS30207 | 2 1/2" | 1 x bolsa/bag |
| GS30221 | 3" | 1 x bolsa/bag |

PASACASCOS 90° 90° THRU HULL CONNECTOR

Fabricados en plástico blanco.
Made in white plastic.

GOLDENSHIP



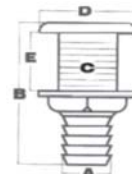
| Ref. | Rosca/Thread | Mang./Hose | Envase/Pack |
|---------|--------------|------------|--------------|
| GS30087 | 3/4" | 20 mm. | 1 x skinpack |
| GS30088 | 1" | 25 mm. | 1 x skinpack |

PASACASCOS THRU HULL SCUPPER

Construidos en nylon reforzado con fibra de vidrio (66-30%) y embellecedor exterior estampado de acero inox AISI 316
Manufactured in reinforced nylon with a S.S. 316 stamped face.



GOLDENSHIP



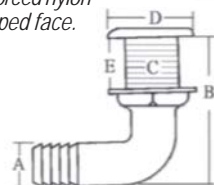
| Ref. | Ø | Dimensiones en mm. | | | | | Envase/Pack |
|---------|--------|--------------------|-----|----|----|----|---------------|
| | | A | B | C | D | E | |
| GS30343 | 3/4" | 19 | 86 | 33 | 48 | 28 | 1 x bolsa/bag |
| GS30344 | 1" | 26 | 86 | 33 | 48 | 28 | 1 x bolsa/bag |
| GS30345 | 1-1/4" | 32 | 103 | 41 | 60 | 33 | 1 x bolsa/bag |
| GS30346 | 1-1/2" | 38 | 103 | 41 | 60 | 33 | 1 x bolsa/bag |
| GS30347 | 2" | 52 | 130 | 56 | 82 | 46 | 1 x bolsa/bag |

PASACASCOS 90° 90° THRU HULL

Construidos en nylon reforzado con fibra de vidrio (66-30%) y embellecedor exterior estampado de acero inox AISI 316
Manufactured in reinforced nylon with a S.S. 316 stamped face.



GOLDENSHIP



| Ref. | Ø | Dimensiones en mm. | | | | | Envase/Pack |
|---------|--------|--------------------|-----|----|----|----|---------------|
| | | A | B | C | D | E | |
| GS30340 | 3/4" | 19 | 81 | 33 | 48 | 28 | 1 x bolsa/bag |
| GS30341 | 1-1/8" | 26 | 115 | 40 | 60 | 28 | 1 x bolsa/bag |
| GS30342 | 1-1/2" | 38 | 119 | 40 | 60 | 33 | 1 x bolsa/bag |

PASACASCOS THRU HULL SCUPPER

Fabricado en plástico cromado.
Para utilizar sobre la línea de flotación.
Chrome plated plastic.
For above waterline use.



| Ref. | Mang./Hose | Envase/Pack |
|-------------|----------------|--------------|
| THTH-750CP | 19 mm = 3/4" | 1 x skinpack |
| THTH-1200CP | 29 mm = 1-1/8" | 1 x skinpack |

PASACASCOS 90° THRU HULL SCUPPER 90°

Fabricado en plástico cromado.
Para utilizar sobre la línea de flotación.
Chrome plated plastic.
For above waterline use.

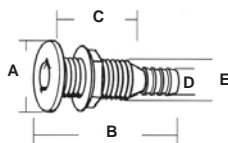


| Ref. | Mang./Hose | Envase/Pack |
|-------------|----------------|--------------|
| THTH-7590CP | 19 mm = 3/4" | 1 x skinpack |
| THTH-1290CP | 29 mm = 1-1/8" | 1 x skinpack |

PASACASCOS / Thru-Hull

PASACASCOS THRU HULL SCUPPER

Fabricado en plástico blanco.
White high impact plastic.

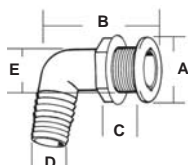


Dimensiones en milímetros
Dimensions in mm.

| Ref. | A | B | C | D | E | Envase/Pack |
|-----------|----|----|----|------|------|--------------|
| THTH-502 | 38 | 78 | 45 | 12,7 | 25,4 | 1 x skinpack |
| THTH-652 | 41 | 86 | 45 | 16 | 25,4 | 1 x skinpack |
| THTH-752 | 38 | 78 | 45 | 19 | 25,4 | 1 x skinpack |
| THTH-1002 | 48 | 89 | 41 | 25,4 | 35 | 1 x skinpack |
| THTH-1202 | 48 | 89 | 44 | 29 | 35 | 1 x skinpack |
| THTH-1502 | 73 | 89 | 44 | 38 | 52 | 1 x skinpack |

PASACASCOS 90° THRU HULL SCUPPER 90°

Fabricado en plástico blanco.
White high impact plastic.

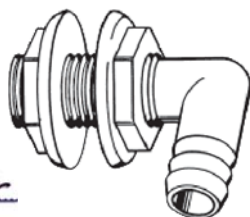


Dimensiones en milímetros
Dimensions in mm.

| Ref. | A | B | C | D | E | Envase/Pack |
|-----------|----|-----|------|----|------|--------------|
| THTH-7592 | 38 | 63 | 25,4 | 19 | 25,4 | 1 x skinpack |
| THTH-1292 | 48 | 89 | 29 | 29 | 35 | 1 x skinpack |
| THTH-1892 | 48 | 58 | 19 | 29 | 35 | 1 x skinpack |
| THTH-1592 | 73 | 108 | 41 | 38 | 52 | 1 x skinpack |

PASACASCOS 90° THRU HULL SCUPPER 90°

Fabricado en plástico blanco.
Desmontable. Doble tuerca.
White high impact plastic.
Double nut.



Dimensiones en milímetros
Dimensions in mm.

| Ref. | A | B | C | D | E | Envase/Pack |
|---------|----|----|----|----|------|--------------|
| THTH-92 | 41 | 67 | 22 | 19 | 25,4 | 1 x skinpack |

PASACASCOS THRU HULL CONNECTOR

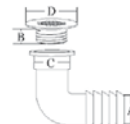
Fabricados en plástico blanco.
Made in white plastic.



| Ref. | Rosca/Thread | Mang./Hose | Envase/Pack |
|---------|--------------|------------|--------------|
| GS30080 | 5/8" | 16 mm. | 1 x skinpack |
| GS30081 | 3/4" | 19 mm. | 1 x skinpack |
| GS30082 | 1" | 25 mm. | 1 x skinpack |
| GS30083 | 1 1/4" | 30 mm. | 1 x skinpack |
| GS30084 | 1 1/2" | 38 mm. | 1 x skinpack |

DESAGÜE BAÑERA 90° DRAIN GRATE 90°

Fabricado en acero inox AISI-316.
Codo a 90° con adaptador a manguera.
Stainless steel 316 with 90° adapter for hose.



Dimensiones en milímetros
Dimensions in mm.

| Ref. | A | B | C | D | Envase/Pack |
|---------|----|----|----|----|---------------|
| GS30305 | 25 | 15 | 36 | 42 | 1 x bolsa/bag |
| GS30306 | 32 | 18 | 50 | 70 | 1 x bolsa/bag |
| GS30307 | 38 | 18 | 50 | 70 | 1 x bolsa/bag |

DESAGÜE BAÑERA 45° DRAIN GRATE 45°

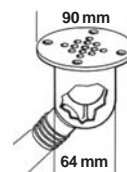
Fabricado en acero inox Aisi-316.
Con bola de bloqueo interna.
Stainless steel 316 with 45°
adapter for hose.



| Ref. | Ø Ext. | Mang./Hose | Envase/Pack |
|---------|--------|------------|---------------|
| GS30335 | 92 mm. | 35 mm. | 1 x bolsa/bag |

DESAGÜE BAÑERA DRAIN GRATE

Fabricado en plástico color blanco.
Válvula anti-retorno incorporada.
Diámetro manguera: 38 mm.
Cockpit scupper drain.
White plastic with check ball valve.
Hose diameter: 1-1/2"



| Ref. | Descripcion | Envase/Pack |
|----------|-------------------------|--------------|
| THCSD-2 | Salida 45° / 45° Outlet | 1 x skinpack |
| THCSD-92 | Salida 90° / 90° Outlet | 1 x skinpack |

PASACASCOS THRU HULL SCUPPER

Fabricado en plástico blanco.
Especialmente diseñado
para las bombas RULE.
White high impact plastic.
Specially designed for RULE pumps.



| Ref. | Mang./Hose | Envase/Pack |
|-------|--------------|--------------|
| RU61S | 19 mm = 3/4" | 1 x skinpack |

PASACASCOS 90° THRU HULL SCUPPER 90°

Fabricado en plástico blanco.
Especialmente diseñado
para las bombas RULE.
White high impact plastic.
Specially designed for RULE pumps.



| Ref. | Mang./Hose | Envase/Pack |
|------|--------------|--------------|
| RU61 | 19 mm = 3/4" | 1 x skinpack |
| RU62 | 16 mm = 5/8" | 1 x skinpack |

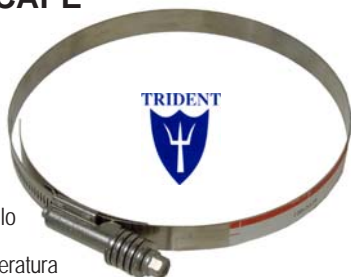
MANGUERAS / Marine Hoses

ABRAZADERA ESCAPE EXHAUST CLAMP

Garantía: 3 años
Warranty: 3 years

Abrazadera autoapriete de alto rendimiento. Fabricada con alojamiento y banda de 16 mm en acero AISI 304 y arandelas y tornillo de acero inox 410.

Reaccionan a los cambios de temperatura de los sistemas de escape, aumentando o disminuyendo su propio diámetro según la temperatura de la manguera.
Stainless steel constant torque clamp. 5/8" wide band, liner, housing screw and bellville springs. Automatic adjusting for heat, cold & compression set.



Para mangueras de:

| Ref. | Ø int/ In. Ø | Ø ext/ Out. Ø |
|-------------|---------------|---------------|
| TRI730-1000 | 13 a 28 mm. | 19 a 41 mm. |
| TRI730-1140 | 25 a 38 mm. | 32 a 54 mm. |
| TRI730-1120 | 32 a 52 mm. | 45 a 66 mm. |
| TRI730-2000 | 48 a 63 mm. | 57 a 79 mm. |
| TRI730-2120 | 60 a 76 mm. | 70 a 92 mm. |
| TRI730-3000 | 70 a 83 mm. | 83 a 104 mm. |
| TRI730-3120 | 83 a 89 mm. | 96 a 117 mm. |
| TRI730-4000 | 102 mm. | 108 a 130 mm. |
| TRI730-4120 | 105 a 114 mm. | 121 a 142 mm. |
| TRI730-5000 | 127 a 130 mm. | 134 a 155 mm. |
| TRI730-5120 | 140 mm. | 146 a 168 mm. |
| TRI730-6000 | 152 mm. | 159 a 180 mm. |
| TRI730-8000 | 203 mm. | 210 a 231 mm. |

ABRAZADERAS «Ball-Lock» BALL-LOCK CABLE TIES

Abrazaderas de acero inox AISI-316, con protección plástica.
Stainless steel AISI-316 ball-lock tie.



| Ref. | Longitud Length | Ancho fleje Width band | Envase Pack |
|---------|-----------------|------------------------|----------------|
| GS38274 | 200 mm. | 4,45 mm. | 25 x bolsa/bag |
| GS38275 | 300 mm. | 4,45 mm. | 25 x bolsa/bag |
| GS38276 | 370 mm. | 4,45 mm. | 25 x bolsa/bag |
| GS38277 | 368 mm. | 7,96 mm. | 25 x bolsa/bag |
| GS38278 | 450 mm. | 7,96 mm. | 25 x bolsa/bag |
| GS38279 | 500 mm. | 7,96 mm. | 25 x bolsa/bag |
| GS38280 | 680 mm. | 7,96 mm. | 25 x bolsa/bag |

PISTOLA ABRAZADERAS BANDING TOOL

Para tensar y cortar las bandas de acero inox. de 0,3mm. a 7,9 mm.
For fasten and automatically cut-off the stainless steel ties, from 0,3 to 7,9 mm.



Ref.
GS38284

PISTOLA ABRAZADERAS BANDING TOOL

Para tensar y cortar las bandas de acero inox. de 0,3mm. a 12 mm.
For fasten and semi-auto cut-off the stainless steel ties, from 0,3 to 12 mm.



Ref.
GS38285

ABRAZADERAS HOSE CLAMPS



Abrazaderas de acero inox AISI-316 W5, con tornillo sinfín de cabeza hexagonal ranurada de 7 mm.

Ancho fleje: 9 mm.
Stainless steel AISI-316 W5 clamps with hexagonal 7 mm. screw
Width band: 9 mm.



| Ref. | Tamaño SAE SAE Size | Tolerancias Width band | Envase Pack |
|---------|---------------------|------------------------|----------------|
| GS38300 | 6 | 8 - 12 mm | 25 x bolsa/bag |
| GS38301 | 8 | 10 - 16 mm | 25 x bolsa/bag |
| GS38302 | 8 | 12 - 20 mm | 25 x bolsa/bag |
| GS38303 | 10 | 16 - 25 mm | 25 x bolsa/bag |
| GS38304 | 12 | 20 - 32 mm | 25 x bolsa/bag |
| GS38305 | 24 | 25 - 40 mm | 25 x bolsa/bag |
| GS38306 | 28 | 32 - 50 mm | 25 x bolsa/bag |
| GS38307 | 36 | 40 - 60 mm | 25 x bolsa/bag |
| GS38308 | 40 | 50 - 70 mm | 25 x bolsa/bag |
| GS38309 | 48 | 60 - 80 mm | 25 x bolsa/bag |
| GS38310 | 52 | 70 - 90 mm | 25 x bolsa/bag |

ABRAZADERAS HOSE CLAMPS



Abrazaderas de acero inox AISI-316 W5, con tornillo sinfín de cabeza hexagonal ranurada de 7 mm.

Ancho fleje: 12 mm.
Stainless steel AISI-316 W5 clamps with hexagonal 7 mm. screw
Width band: 12 mm.



| Ref. | Tamaño SAE SAE Size | Tolerancias Width band | Envase Pack |
|---------|---------------------|------------------------|----------------|
| GS38311 | 10 | 16 - 25 mm | 25 x bolsa/bag |
| GS38312 | 12 | 20 - 32 mm | 25 x bolsa/bag |
| GS38313 | 24 | 25 - 40 mm | 25 x bolsa/bag |
| GS38314 | 28 | 32 - 50 mm | 25 x bolsa/bag |
| GS38315 | 36 | 40 - 60 mm | 25 x bolsa/bag |
| GS38316 | 40 | 50 - 70 mm | 25 x bolsa/bag |
| GS38317 | 48 | 60 - 80 mm | 25 x bolsa/bag |
| GS38318 | 52 | 70 - 90 mm | 10 x bolsa/bag |
| GS38319 | 60 | 80 - 100 mm | 10 x bolsa/bag |
| GS38320 | 64 | 90 - 110 mm | 10 x bolsa/bag |
| GS38321 | 72 | 100 - 120 mm | 10 x bolsa/bag |
| GS38322 | 80 | 110 - 130 mm | 5 x bolsa/bag |
| GS38323 | 80 | 120 - 140 mm | 5 x bolsa/bag |
| GS38324 | 88 | 130 - 150 mm | 5 x bolsa/bag |
| GS38325 | 96 | 140 - 160 mm | 5 x bolsa/bag |
| GS38326 | -- | 150 - 170 mm | 5 x bolsa/bag |
| GS38327 | -- | 160 - 180 mm | 5 x bolsa/bag |
| GS38328 | -- | 170 - 190 mm | 5 x bolsa/bag |
| GS38329 | -- | 180 - 200 mm | 5 x bolsa/bag |